

# 5/8" WIDTH TONG DIES

OFFERED IN FOUR TOOTH PATTERNS: STANDARD (-0), PYRAMID (-P), FINE PYRAMID (-FP) AND GRITFACE® (G1-XXXX-XXX-5)  
**NOT IN DIAMOND TOOTH**

Special Note: We cannot manufacture thicker than 3/4", or thinner than 5/16".



5/8" Standard Tooth Tong Die



5/8" **GRITFACE®** Tong Die  
 Use with corrosion resistant alloy (CRA) tubulars



5/8" Standard Tooth (Reducer) Tong Die

Standard Tooth #	GRITFACE® #	Fine Tooth Pyramid #	Dimensions (W x H x L)	Weight (lb.)	OEM Ref. #
11-0005-314-0	G1-0005-314-5	11-0005-314-FP	5/8" x 5/16" x 3-7/8"	0.160	4052
11-0005-408-0	G1-0005-408-5	11-0005-408-FP	5/8" x 5/16" x 4-1/2"	0.180	4002
11-0006-115-0	G1-0006-115-5	11-0006-115-FP	5/8" x 3/8" x 1-15/16"	0.100	4009
11-0006-308-0	G1-0006-308-5	11-0006-308-FP	5/8" x 3/8" x 3-1/2"	0.170	4030
11-0006-314-0	G1-0006-314-5	11-0006-314-FP	5/8" x 3/8" x 3-7/8"	0.380	4051
11-0006-408-0	G1-0006-408-5	11-0006-408-FP	5/8" x 3/8" x 4-1/2"	0.440	4001
11-0531-308-0	G1-0531-308-5	11-0531-308-FP	5/8" x 17/32" x 3-1/2"	0.250	4031
11-0531-314-0	G1-0531-314-5	11-0531-314-FP	5/8" x 17/32" x 3-7/8"	0.280	4053
11-0531-408-0	G1-0531-408-5	11-0531-408-FP	5/8" x 17/32" x 4-1/2"	0.320	4003
11-0010-308-0	G1-0010-308-5	11-0010-308-FP	5/8" X 5/8" X 3-1/2"	0.300	4032
11-0010-314-0	G1-0010-314-5	11-0010-314-FP	5/8" X 5/8" X 3-7/8"	0.330	4054
11-0010-408-0	G1-0010-408-5	11-0010-408-FP	5/8" X 5/8" X 4-1/2"	0.380	4004
11-0011-314-0	G1-0011-314-5	11-0011-314-FP	5/8" X 11/16" X 3-7/8"	0.360	4055
11-0011-408-0	G1-0011-408-5	11-0011-408-FP	5/8" X 11/16" X 4-1/2"	0.420	4005

Note: We can only manufacture GRITFACE® dies to be contoured, not steel dies.

# 1" WIDTH TONG DIES

OFFERED IN ALL FIVE TOOTH PATTERNS: STANDARD (-0), DIAMOND (-D), PYRAMID (-P), FINE PYRAMID (-FP) AND GRITFACE® (G2-XXXX-XXX-5)

Special Note: We cannot manufacture thicker than 3/4", or thinner than 3/8"



1" Standard Tooth Tong Die



1" GRITFACE® Tong Die  
Use with corrosion resistant alloy (CRA) tubulars



1" Diamond Tooth Tong Die

Standard Tooth #	GRITFACE® #	Diamond Tooth #	Fine Tooth Pyramid #	Dimensions (W x H x L)	Weight (lb.)	OEM Ref. #
12-0006-107-0	G2-0006-107-5	12-0006-107-D	12-0006-107-FP	1" x 3/8" x 1-7/16"	0.170	1507
12-0006-114-0	G2-0006-114-5	12-0006-114-D	12-0006-114-FP	1" x 3/8" x 1-7/8"	0.180	1506
12-0006-115-0	G2-0006-115-5	12-0006-115-D	12-0006-115-FP	1" x 3/8" x 1-15/16"	0.190	1501
12-0006-202-0	G2-0006-202-5	12-0006-202-D	12-0006-202-FP	1" x 3/8" x 2-1/8"	0.200	1502
12-0006-208-0	G2-0006-208-5	12-0006-208-D	12-0006-208-FP	1" x 3/8" x 2-1/2"	0.210	1503
12-0006-210-0	G2-0006-210-5	12-0006-210-D	12-0006-210-FP	1" x 3/8" x 2-5/8"	0.220	1504
12-0006-214-0	G2-0006-214-5	12-0006-214-D	12-0006-214-FP	1" x 3/8" x 2-7/8"	0.250	-
12-0006-300-0	G2-0006-300-5	12-0006-300-D	12-0006-300-FP	1" x 3/8" x 3"	0.250	-
12-0006-314-0	G2-0006-314-5	12-0006-314-D	12-0006-314-FP	1" x 3/8" x 3-7/8"	0.320	1505
12-0006-404-0	G2-0006-404-5	12-0006-404-D	12-0006-404-FP	1" x 3/8" x 4-1/4"	0.350	1508
12-0006-408-0	G2-0006-408-5	12-0006-408-D	12-0006-408-FP	1" x 3/8" x 4-1/2"	0.370	1509
12-0006-500-0	G2-0006-500-5	12-0006-500-D	12-0006-500-FP	1" x 3/8" x 5"	0.415	-
12-0006-512-0	G2-0006-512-5	12-0006-512-D	12-0006-512-FP	1" x 3/8" x 5-3/4"	0.470	1510
12-0007-314-0	G2-0007-314-5	12-0007-314-D	12-0007-314-FP	1" x 7/16" x 3-7/8"	0.380	1511
12-0008-314-0	G2-0008-314-5	12-0008-314-D	12-0008-314-FP	1" x 1/2" x 3-7/8"	0.440	1521
12-0008-500-0	G2-0008-500-5	12-0008-500-D	12-0008-500-FP	1" x 1/2" x 5"	0.560	1522
12-0009-208-0	G2-0009-208-5	12-0009-208-D	12-0009-208-FP	1" x 9/16" x 2-1/2"	0.320	1531
12-0009-314-0	G2-0009-314-5	12-0009-314-D	12-0009-314-FP	1" x 9/16" x 3-7/8"	0.500	1532
12-0010-314-0	G2-0010-314-5	12-0010-314-D	12-0010-314-FP	1" x 5/8" x 3-7/8"	0.550	1541
12-0011-314-0	G2-0011-314-5	12-0011-314-D	12-0011-314-FP	1" x 11/16" x 3-7/8"	0.610	1542
12-0012-314-0	G2-0012-314-5	12-0012-314-D	12-0012-314-FP	1" x 3/4" x 3-7/8"	0.670	1543
12-0012-404-0	G2-0012-404-5	12-0012-404-D	12-0012-404-FP	1" x 3/4" x 4-1/4"	-	1508

Note: We can only manufacture GRITFACE® dies to be contoured, not steel dies.

# 1-1/4" WIDTH TONG DIES

OFFERED IN ALL FIVE TOOTH PATTERNS: STANDARD (-0), DIAMOND (-D), PYRAMID (-P), FINE PYRAMID (-FP)  
AND GRITFACE® (G3-XXXX-XXX-5)

Special Note: We cannot manufacture thicker than 1-1/2", or thinner than 3/8"



1-1/4" Standard Tooth Tong Die



1-1/4" **GRITFACE®** Tong Die  
Use with corrosion resistant alloy (CRA) tubulars



1-1/4" Diamond Tooth Tong Die

Standard Tooth #	GRITFACE® #	Diamond Tooth #	Fine Tooth Pyramid #	Dimensions (W x H x L)	Weight (lb.)	OEM Ref. #
13-0006-208-0	G3-0006-208-5	13-0006-208-D	13-0006-208-FP	1-1/4" x 3/8" x 2-1/2"	0.250	-
13-0006-314-0	G3-0006-314-5	13-0006-314-D	13-0006-314-FP	1-1/4" x 3/8" x 3-7/8"	0.390	1614
13-0006-500-0	G3-0006-500-5	13-0006-500-D	13-0006-500-FP	1-1/4" x 3/8" x 5"	0.500	1610
13-0006-514-0	G3-0006-514-5	13-0006-514-D	13-0006-514-FP	1-1/4" x 3/8" x 5-7/8"	0.590	-
13-0007-208-0	G3-0007-208-5	13-0007-208-D	13-0007-208-FP	1-1/4" x 7/16" x 2-1/2"	0.300	1611
13-0007-314-0	G3-0007-314-5	13-0007-314-D	13-0007-314-FP	1-1/4" x 7/16" x 3-7/8"	0.460	1612
13-0007-500-0	G3-0007-500-5	13-0007-500-D	13-0007-500-FP	1-1/4" x 7/16" x 5"	0.600	1617
13-0007-514-0	G3-0007-514-5	13-0007-514-D	13-0007-514-FP	1-1/4" x 7/16" x 5-7/8"	0.710	-
13-0008-208-0	G3-0008-208-5	13-0008-208-D	13-0008-208-FP	1-1/4" x 1/2" x 2-1/2"	0.350	1612
13-0008-214-0	G3-0008-214-5	13-0008-214-D	13-0008-214-FP	1-1/4" x 1/2" x 2-7/8"	0.390	-
13-0008-314-0	G3-0008-314-5	13-0008-314-D	13-0008-314-FP	1-1/4" x 1/2" x 3-7/8"	0.540	1601
13-0008-400-0	G3-0008-400-5	13-0008-400-D	13-0008-400-FP	1-1/4" x 1/2" x 4"	0.545	-
13-0008-500-0	G3-0008-500-5	13-0008-500-D OEM: 16401-6 B+V: 70676	13-0008-500-FP	1-1/4" x 1/2" x 5"	0.690	16401-2 / 1602
13-0008-506-0	G3-0008-506-5	13-0008-506-D	13-0008-506-FP	1-1/4" x 1/2" x 5-3/8"	0.726	-
13-0008-514-0	G3-0008-514-5	13-0008-514-D OEM: 16402-6 B+V: 70675	13-0008-514-FP	1-1/4" x 1/2" x 5-7/8"	0.820	16402-2 / 1603
13-0009-208-0	G3-0009-208-5	13-0009-208-D	13-0009-208-FP	1-1/4" x 9/16" x 2-1/2"	0.390	1621
13-0009-314-0	G3-0009-314-5	13-0009-314-D	13-0009-314-FP	1-1/4" x 9/16" x 3-7/8"	0.610	1622
13-0009-500-0	G3-0009-500-5	13-0009-500-D	13-0009-500-FP	1-1/4" x 9/16" x 5"	0.780	1623
13-0009-514-0	G3-0009-514-5	13-0009-514-D	13-0009-514-FP	1-1/4" x 9/16" x 5-7/8"	0.920	-
13-0010-208-0	G3-0010-208-5	13-0010-208-D	13-0010-208-FP	1-1/4" x 5/8" x 2-1/2"	0.440	1631
13-0010-314-0	G3-0010-314-5	13-0010-314-D	13-0010-314-FP	1-1/4" x 5/8" x 3-7/8"	0.680	1632
13-0010-500-0	G3-0010-500-5	13-0010-500-D	13-0010-500-FP	1-1/4" x 5/8" x 5"	0.870	1633
13-0010-514-0	G3-0010-514-5	13-0010-514-D	13-0010-514-FP	1-1/4" x 5/8" x 5-7/8"	1.020	1694
13-0011-208-0	G3-0011-208-5	13-0011-208-D	13-0011-208-FP	1-1/4" x 11/16" x 2-1/2"	0.480	1641
13-0011-314-0	G3-0011-314-5	13-0011-314-D	13-0011-314-FP	1-1/4" x 11/16" x 3-7/8"	0.740	1642
13-0011-500-0	G3-0011-500-5	13-0011-500-D	13-0011-500-FP	1-1/4" x 11/16" x 5"	0.960	1646
13-0011-514-0	G3-0011-514-5	13-0011-514-D	13-0011-514-FP	1-1/4" x 11/16" x 5-7/8"	1.130	1644

Note: We can only manufacture GRITFACE® dies to be contoured, not steel dies.

<b>Standard Tooth #</b>	<b>GRITFACE® #</b>	<b>Diamond Tooth #</b>	<b>Fine Tooth Pyramid #</b>	<b>Dimensions (W x H x L)</b>	<b>Weight (lb.)</b>	<b>OEM Ref. #</b>
13-0012-314-0	G3-0012-314-5	13-0012-314-D	13-0012-314-FP	1-1/4" x 3/4" x 3-7/8"	0.810	1651
13-0012-500-0	G3-0012-500-5	13-0012-500-D	13-0012-500-FP	1-1/4" x 3/4" x 5"	1.050	1693
13-0012-514-0	G3-0012-514-5	13-0012-514-D	13-0012-514-FP	1-1/4" x 3/4" x 5-7/8"	1.230	1649
13-0013-314-0	G3-0013-314-5	13-0013-314-D	13-0013-314-FP	1-1/4" x 13/16" x 3-7/8"	0.880	1661
13-0013-500-0	G3-0013-500-5	13-0013-500-D	13-0013-500-FP	1-1/4" x 13/16" x 5"	1.140	1664
13-0013-514-0	G3-0013-514-5	13-0013-514-D	13-0013-514-FP	1-1/4" x 13/16" x 5-7/8"	1.340	-
13-0014-314-0	G3-0014-314-5	13-0014-314-D	13-0014-314-FP	1-1/4" x 7/8" x 3-7/8"	0.950	1671
13-0014-500-0	G3-0014-500-5	13-0014-500-D	13-0014-500-FP	1-1/4" x 7/8" x 5"	1.230	1673
13-0014-514-0	G3-0014-514-5	13-0014-514-D	13-0014-514-FP	1-1/4" x 7/8" x 5-7/8"	1.450	1672
13-0015-314-0	G3-0015-314-5	13-0015-314-D	13-0015-314-FP	1-1/4" x 15/16" x 3-7/8"	1.020	1681
13-0015-500-0	G3-0015-500-5	13-0015-500-D	13-0015-500-FP	1-1/4" x 15/16" x 5"	1.320	1682
13-0015-514-0	G3-0015-514-5	13-0015-514-D	13-0015-514-FP	1-1/4" x 15/16" x 5-7/8"	1.550	-
13-0016-314-0	G3-0016-314-5	13-0016-314-D	13-0016-314-FP	1-1/4" x 1" x 3-7/8"	1.250	1691
13-0016-500-0	G3-0016-500-5	13-0016-500-D	13-0016-500-FP	1-1/4" x 1" x 5"	1.610	1697
13-0016-514-0	G3-0016-514-5	13-0016-514-D	13-0016-514-FP	1-1/4" x 1" x 5-7/8"	1.800	1692
13-0101-314-0	G3-0101-314-5	13-0101-314-D	13-0101-314-FP	1-1/4" x 1-1/16" x 3-7/8"	1.140	1690
13-0102-314-0	G3-0102-314-5	13-0102-314-D	13-0102-314-FP	1-1/4" x 1-1/8" x 3-7/8"	1.205	-
13-0102-500-0	G3-0102-500-5	13-0102-500-D	13-0102-500-FP	1-1/4" x 1-1/8" x 5"	-	1684
13-0108-500-0	G3-0108-500-5	13-0108-500-D	13-0108-500-FP	1-1/4" x 1-1/2" x 5"	-	1676

Note: We can only manufacture GRITFACE® dies to be contoured, not steel dies.

# INSERTS FOR VARCO® STYLE HANDLING TOOLS

(GRITFACE®, FINE TOOTH AND BEVELED INSERTS ALSO AVAILABLE)

Standard Tooth #	GRITFACE® #	Tool Size	Pipe Size	Description	OEM Ref. #	Blohm + Voss (B+V) Ref. #
AA-0308-0206-0	GA-0308-0206-4	3-1/2"	2-3/8"	Reducer	2160	80110
AA-0308-0214-0	GA-0308-0214-4	3-1/2"	2-7/8"	Reducer	2161	80111
AA-0308-0308-0	GA-0308-0308-4	3-1/2"	3-1/2"	Basic	2162	80112
AA-0408-0308-0	GA-0408-0308-4	4-1/2"	3-1/2"	Reducer	2163	80113
AA-0408-0400-0	GA-0408-0400-4	4-1/2"	4"	Reducer	2164	80114
AA-0408-0408-0	GA-0408-0408-4	4-1/2"	4-1/2"	Basic	2165	80115
AA-0500-0400-0	GA-0500-0400-4	5"	4"	Reducer	2168	80118
AA-0500-0408-0	GA-0500-0408-4	5"	4-1/2"	Reducer	2166	80116
AA-0500-0500-0	GA-0500-0500-4	5"	5"	Basic	2167	80117
AA-0508-0408-0	GA-0508-0408-4	5-1/2"	4-1/2"	Reducer	2168	80118
AA-0508-0500-0	GA-0508-0500-4	5-1/2"	5"	Reducer	2169	80119
AA-0508-0508-0	GA-0508-0508-4	5-1/2"	5-1/2"	Basic	2170	80120
AA-0700-0514-0	GA-0700-0514-4	7"	5-7/8"	Reducer	-	-
AA-0700-0600-0	GA-0700-0600-4	7"	6"	Reducer	-	80118
AA-0700-0610-0	GA-0700-0610-4	7"	6-5/8"	Reducer	2172	80122
AA-0700-0700-0	GA-0700-0700-4	7"	7"	Basic	2173	80123
AA-0710-0610-0	GA-0710-0610-4	7-5/8"	6-5/8"	Reducer	2632	-
AA-0710-0700-0	GA-0710-0700-4	7-5/8"	7"	Reducer	2623	-
AA-0710-0702-0	GA-0710-0702-4	7-5/8"	7-1/8"	Reducer	-	-
AA-0710-0710-0	GA-0710-0710-4	7-5/8"	7-5/8"	Basic	2633	-
AA-0710-0712-0	GA-0710-0712-4	7-5/8"	7-3/4"	Oversize	-	-
AA-0910-0810-0	GA-0910-0810-4	9-5/8"	8-5/8"	Reducer	2640	-
AA-0910-0812-0	GA-0910-0812-4	9-5/8"	8-3/4"	Reducer	2650	-
AA-0910-0906-0	GA-0910-0906-4	9-5/8"	9-3/8"	Reducer	-	-
AA-0910-0910-0	GA-0910-0910-4	9-5/8"	9-5/8"	Basic	2633	-
AA-0910-0912-0	GA-0910-0912-4	9-5/8"	9-3/4"	Oversize	2649	-
AA-0910-0914-0	GA-0910-0914-4	9-5/8"	9-7/8"	Oversize	2649	-
AA-1112-1012-0	GA-1112-1012-4	11-3/4"	10-3/4"	Reducer	2640	-
AA-1112-1112-0	GA-1112-1112-4	11-3/4"	11-3/4"	Basic	2637	-
AA-1112-1114-0	GA-1112-1114-4	11-3/4"	11-7/8"	Oversize	2651	-
AA-1306-1212-0	GA-1306-1212-4	13-3/8"	12-3/4"	Reducer	2636	-
AA-1306-1306-0	GA-1306-1306-4	13-3/8"	13-3/8"	Basic	2637	-
AA-1306-1308-0	GA-1306-1308-4	13-3/8"	13-1/2"	Oversize	-	-
AA-1400-1212-0	GA-1400-1212-4	14"	12-3/4"	Reducer	2657	-
AA-1400-1214-0	GA-1400-1214-4	14"	12-7/8"	Reducer	2656	-
AA-1400-1306-0	GA-1400-1306-4	14"	13-3/8"	Reducer	2636	-
AA-1400-1308-0	GA-1400-1308-4	14"	13-1/2"	Reducer	2652	-
AA-1400-1310-0	GA-1400-1310-4	14"	13-5/8"	Reducer	2653	-
AA-1400-1312-0	GA-1400-1312-4	14"	13-3/4"	Reducer	2655	-
AA-1400-1400-0	GA-1400-1400-4	14"	14"	Basic	2635	-
AA-1600-1600-0	GA-1600-1600-4	16"	16"	Basic	2635	-
AA-2000-1810-0	GA-2000-1810-4	20"	18-5/8"	Reducer	2638	-
AA-2000-2000-0	GA-2000-2000-4	20"	20"	Basic	2635	-
AA-2400-2400-0	GA-2400-2400-4	24"	24"	Basic	2635	-

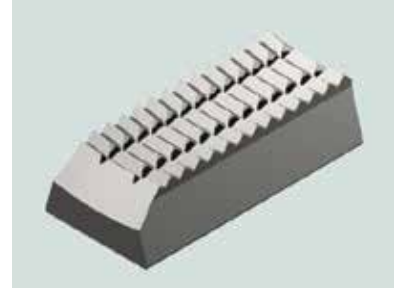




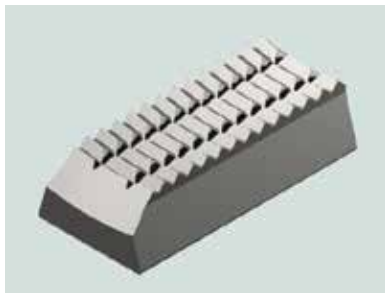
VARCO® Standard Tooth Tong Die



VARCO® **GRITFACE**® Tong Die  
Use with corrosion resistant alloy (CRA) tubulars



VARCO® Beveled (Reducer) Insert



VARCO® Beveled Standard Tooth Insert



VARCO® Beveled **GRITFACE**® Insert  
Use with corrosion resistant alloy (CRA) tubulars

**Quantities Required for VARCO® Rotary Slips**

VARCO® Tool Size	SDS	SDHL	SDML	SDM	SDXL	SDL
3-1/2"	24	-	30	30	-	36
4-1/2"	36	-	45	45	54	54
5"	-	-	45	45	54	54
5-1/2"	-	45	45	45	54	54
7"	-	-	-	-	72	60

**Quantities Required for VARCO® Power Slips**

VARCO® Tool Size	Pipe Size	PS-15	PS-16
4-1/2"	3-1/2"	32/16B	32-16B
4-1/2"	4"	32/16B	32/16B
4-1/2"	4-1/2"	48	48
5-1/2"	4-1/2"	32/16B	32/16B
5-1/2"	5	32/16B	32/16B
5-1/2"	5-1/2"	48	48
7-5/8"	6-5/8"	48/24B	48/24B

**Quantities Required for VARCO® Casing Elevators**

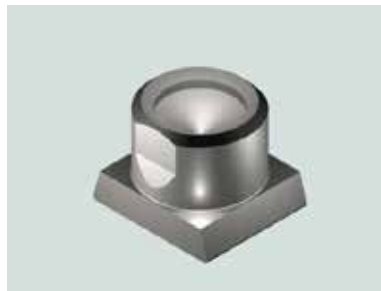
<b>VARCO® Tool Size</b>	<b>Pipe Size</b>	<b>200 Ton 7-5/8"</b>	<b>350 Ton 14"</b>	<b>500 Ton 14"</b>	<b>750 Ton 14"</b>	<b>1000 Ton 24"</b>	<b>500 Ton 24"</b>	<b>750 Ton 24"</b>
3-1/2"	2-3/8"	12/12B	-	-	-	-	-	-
3-1/2"	2-7/8"	12/12B	-	-	-	-	-	-
3-1/2"	3-1/2"	24B	-	-	-	-	-	-
4-1/2"	3-1/2"	16/16B	-	-	-	-	-	-
4-1/2"	4"	16/16B	-	-	-	-	-	-
4-1/2"	4-1/2"	32	-	-	-	-	-	-
5-1/2"	4-1/2"	16/16B	24/16B	32/16B	-	-	-	-
5-1/2"	5"	16/16B	24/16B	32/16B	-	-	-	-
5-1/2"	5-1/2"	32	40	48	-	-	-	-
7"	7"	48	60	72	-	-	-	-
7-5/8"	6-5/8"	24/24B	36/24B	48/24B	60/24B	-	-	-
7-5/8"	7"	24/24B	36/24B	48/24B	60/24B	-	-	-
7-5/8"	7-1/8"	24/24B	36/24B	48/24B	60/24B	-	-	-
7-5/8"	7-5/8"	48	60	72	84	-	-	-
7-5/8"	7-3/4"	48	60	72	84	-	-	-
9-5/8"	8-5/8"	-	48/32B	64/32B	80/32B	96/24B	-	-
9-5/8"	8-3/4"	-	48/32B	64/32B	80/32B	96/24B	-	-
9-5/8"	9-5/8"	-	80	96	112	120	-	-
9-5/8"	9-3/4"	-	80	96	112	120	-	-
9-5/8"	9-7/8"	-	80	96	112	120	-	-
11-3/4"	10-3/4"	-	60/40B	80/40B	100/40B	144/36B	-	-
11-3/4"	11-3/4"	-	100	120	140	180	-	-
11-3/4"	11-7/8"	-	100	120	140	180	-	-
13-3/8"	12-3/4"	-	100	120	140	180	-	-
13-3/8"	13-3/8"	-	100	120	140	180	-	-
13-3/8"	13-1/2"	-	100	120	140	180	-	-
14"	13-1/2"	-	60/40B	80/40B	100/40B	192/48B	-	-
14"	13-5/8"	-	60/40B	80/40B	100/40B	192/48B	-	-
14"	13-3/8"	-	60/40B	80/40B	100/40B	192/48B	-	-
14"	13-3/4"	-	60/40B	80/40B	100/40B	192/48B	-	-
14"	14"	-	100	120	140	240	-	-
16"	16"	-	-	180	210	300	180	210
20"	18-5/8"	-	-	-	-	720	420	510
20"	20"	-	-	180	210	300	180	210
24"	24"	-	-	180	210	300	180	210



# CIRCULAR BUTTONS FOR VARCO® HANDLING TOOLS



Circular Button for VARCO® Tool



Circular Button (Reducer) for VARCO® Tool

	<b>Description</b>	<b>OEM Ref. #</b>	<b>Blohm + Voss (B+V) Ref. #</b>
PDT2513	5-1/2" x 7" Circular Button for DCS-LD/C slip	2513	-
PDT2619	7" Circular Button for VARCO® Casing Slip CMS-XL	2619	80150
PDT2620	4" to 4-1/2" & 5-1/2" to 7" Button for VARCO® Drill Collar Slips	2620	80151
PDT2625	11" x 12-3/4" Circular Button for VARCO® Drill Collar Slips	2625	80152
PDT2626	18-5/8" Circular Button for VARCO® Casing Slip CMS-XL	2626	80153
PDT2627	8-1/2" to 10" Button for VARCO® Drill Collar Slips	2627	80154
PDT2628	3" to 4" & 4-1/2" to 6" Button for VARCO® Drill Collar Slips	2628	80155
PDT2630	6-3/4" to 9-1/2" & 8" to 9-1/2" & 12" to 14" Button for VARCO® Drill Collar Slips	2630	80156
PDT2631	7-5/8"; 8-5/8"; 9-5/8"; 10-3/4"; 13-3/8" Button for VARCO® Casing Slip CMS-XL	2631	80157
PDT13868	1-3/8" Circular Button for VARCO® Casing Slip	13868	80158

## Quantities Required for VARCO® Drill Collar Slips (DCS)

<b>Tool Size</b>	<b>PDT2513</b>	<b>PDT2620</b>	<b>PDT2625</b>	<b>PDT2626</b>	<b>PDT2627</b>	<b>PDT2628</b>	<b>PDT2630</b>
3" to 4" DCS-S	-	-	-	-	-	49	-
4" to 4-7/8" DCS-S	-	49	-	-	-	-	-
4-1/2" to 6" DCS-R	-	-	-	-	-	63	-
5-1/2" to 7" DCS-R	-	63	-	-	-	-	-
5-1/2" to 7" DCS-L	88	-	-	-	-	-	-
6-3/4" to 8-1/4" DCS-L	-	-	-	-	-	-	88
8" to 9-1/2" DCS-L	-	-	-	-	-	-	96
8-1/2" to 10" DCS-L	-	-	-	-	104	-	-
9-1/4" to 11-1/4" DCS-L	-	-	-	-	-	-	112
11" to 12-3/4" DCS-L	-	-	136	-	-	-	-
12" to 14" DCS-L	-	-	-	-	-	-	136



**Quantities Required for VARCO® Casing Slips (CMS-XL)**

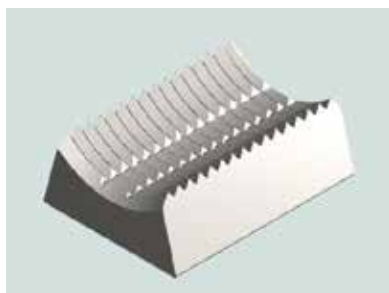
Tool Size	PDT2619	PDT2626	PDT2627	PDT2628	PDT2630	PDT2631	PDT13868
6-5/8"	-	-	-	144	-	-	-
7"	144	-	-	-	-	-	-
7-5/8"	-	-	-	-	144	-	-
8-5/8"	-	-	-	-	156	-	-
9-5/8"	-	-	-	-	168	-	-
10-3/4"	-	-	-	-	180	-	-
11-3/4"	-	-	204	-	-	-	-
13-3/8"	-	-	-	-	216	-	-
16"	-	-	-	-	-	252	-
18-5/8"	-	300	-	-	-	-	-
20"	-	-	-	-	-	312	-
22"	-	-	-	-	-	-	360
24"	-	-	-	-	-	360	-
26"	-	-	-	-	-	396	-
28"	-	-	-	-	-	-	432
30"	-	-	-	-	-	444	-

**Quantities Required for VARCO® Casing Slips (CMS-XL)****GRITFACE® Non-Marking Buttons (For CMS-XL Only)**

Tool Size	G-2619-4	G-2626-4	G2627-4	G-2628-4	G-2630-4	G-2631-4
6-5/8"	-	-	-	72	-	-
7"	72	-	-	-	-	-
7-5/8"	-	-	-	-	72	-
8-5/8"	-	-	-	-	78	-
9-5/8"	-	-	-	-	84	-
10-3/4"	-	-	-	-	90	-
11-3/4"	-	-	102	-	-	-
13-3/8"	-	-	-	-	108	-
16"	-	-	-	-	-	126
18-5/8"	-	150	-	-	-	-
20"	-	-	-	-	-	156
24"	-	-	-	-	-	180
26"	-	-	-	-	-	198
30"	-	-	-	-	-	222

# INSERTS FOR BJ® HANDLING TOOLS

(FINE TOOTH, GRITFACE®, BOTTOM BEVELED, TOP BEVELED, BIDIRECTIONAL AND BIDIRECTIONAL BEVELED INSERTS ALSO AVAILABLE)



BJ® Standard Tooth Insert 2-7/8" YT, HYT, MYT, 50T & 100T Spiders



BJ® GRITFACE® Insert 2-7/8" YT, HYT, MYT, 50T & 100T Spiders  
Use with corrosion resistant alloy (CRA) tubulars

Inserts for BJ® YT, MYT, HYT (Special Note: 2-3/8" OD Pipe Size is the smallest we can manufacture)

Standard Tooth #	GRITFACE® #	Tool Size	Pipe Size	Description	OEM Ref. #	Blohm + Voss (B+V) Ref. #
MM-0214-0214-0	GM-0214-0214-4	2-7/8"	2-7/8"	Basic	24773	671026
MM-0214-0206-0	GM-0214-0206-4	2-7/8"	2-3/8"	Reducer	29255	671025
YY-0308-0214-0	GY-0308-0214-4	3-1/2"	2-7/8"	Reducer	30358	-
YY-0308-0308-0	GY-0308-0308-4	3-1/2"	3-1/2"	Basic	24774	671027



BJ® Standard Tooth Insert 3-1/2" YT, HYT, MYT, 50T & 100T Spiders



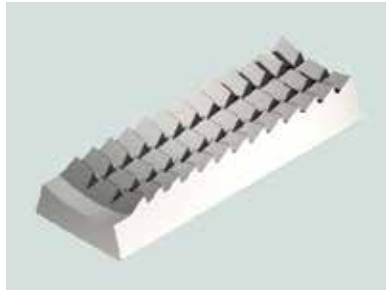
BJ® GRITFACE® Insert 3-1/2" YT, HYT, MYT, 50T & 100T Spiders  
Use with corrosion resistant alloy (CRA) tubulars

Quantities Required for BJ® YT, MYT, HYT

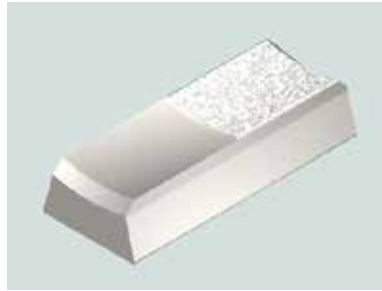
BJ® Tool Size	YT	MYT	HYT
3-1/2" (YY)	24	8	32
2-7/8" (MM)	12	8	16

Inserts for BJ® YC, HYC, MYC, Casing Elevators, etc.

Standard Tooth #	GRITFACE® #	Bi-Dir Tooth #	Tool Size	Pipe Size	Description	OEM Ref. #	Blohm + Voss (B+V) Ref. #
JJ-0308-0206-0	GJ-0308-0206-4	JJ-0308-0206-G	3-1/2"	2-3/8"	Reducer	24777	351001
JJ-0308-0214-0	GJ-0308-0214-4	JJ-0308-0214-G	3-1/2"	2-7/8"	Reducer	25780	350602
JJ-0308-0308-0	GJ-0308-0308-4	JJ-0308-0308-G	3-1/2"	3-1/2"	Basic	16441	350103
JJ-0400-0400-0	GJ-0400-0400-4	JJ-0400-0400-G	4"	4"	Basic	16442	-
JJ-0408-0308-0	GJ-0408-0308-4	JJ-0408-0308-G	4-1/2"	3-1/2"	Reducer	24779	350903
JJ-0408-0400-0	GJ-0408-0400-4	JJ-0408-0400-G	4-1/2"	4"	Reducer	24781	350504



BJ® Standard Tooth Insert



BJ® GRITFACE® (Reducer) Insert  
Use with corrosion resistant alloy (CRA) tubulars



BJ® Bidirectional Beveled Insert

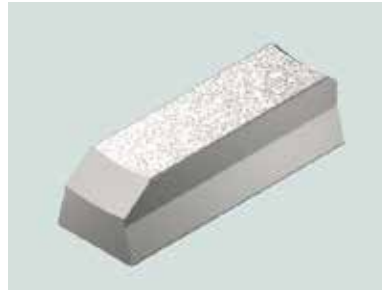
**Inserts for BJ® YC, HYC, MYC, Casing Elevators, etc.**

Standard Tooth #	GRITFACE®#	Bi-Dir Tooth #	Tool Size	Pipe Size	Description	OEM Ref. #	Blohm + Voss (B+V) Ref. #
JJ-0408-0408-0	GJ-0408-0408-4	JJ-0408-0408-G	4-1/2"	4-1/2"	Basic	16408	350105
JJ-0508-0408-0	GJ-0508-0408-4	JJ-0508-0408-G	5-1/2"	4-1/2"	Reducer	24785	350905
JJ-0508-0500-0	GJ-0508-0500-4	JJ-0508-0500-G	5-1/2"	5"	Reducer	24783	350506
JJ-0508-0508-0	GJ-0508-0508-4	JJ-0508-0508-G	5-1/2"	5-1/2"	Basic	16407	350107
JJ-0700-0512-0	GJ-0700-0512-4	JJ-0700-0512-G	7"	5-3/4"	Reducer	29254	-
JJ-0700-0514-0	GJ-0700-0514-4	JJ-0700-0514-G	7"	5-7/8"	Reducer	-	351008
JJ-0700-0600-0	GJ-0700-0600-4	JJ-0700-0600-G	7"	6"	Reducer	25474	-
JJ-0700-0610-0	GJ-0700-0610-4	JJ-0700-0610-G	7"	6-5/8"	Reducer	24748	350409
JJ-0700-0700-0	GJ-0700-0700-4	JJ-0700-0700-G	7"	7"	Basic	16407	350110
JJ-0710-0610-0	GJ-0710-0640-4	JJ-0710-0610-G	7-5/8"	6-5/8"	Reducer	25474	350909
JJ-0710-0700-0	GJ-0710-0700-4	JJ-0710-0700-G	7-5/8"	7"	Reducer	26750	350610
JJ-0710-0710-0	GJ-0710-0710-4	JJ-0710-0710-G	7-5/8"	7-5/8"	Basic	16407	350111
JJ-0710-0712-0	GJ-0710-0712-4	JJ-0710-0712-G	7-5/8"	7-3/4"	Oversize	32477	350011
JJ-0810-0710-0	GJ-0810-0710-4	JJ-0810-0710-G	8-5/8"	7-5/8"	Reducer	25474	-
JJ-0810-0712-0	GJ-0810-0712-4	JJ-0810-0712-G	8-5/8"	7-3/4"	Reducer	34029	-
JJ-0810-0810-0	GJ-0810-0810-4	JJ-0810-0810-G	8-5/8"	8-5/8"	Basic	15660	-
JJ-0810-0812-0	GJ-0810-0812-4	JJ-0810-0812-G	8-5/8"	8-3/4"	Oversize	32477	-
JJ-0814-0714-0	GJ-0814-0714-4	JJ-0814-0714-G	8-7/8"	7-7/8"	Reducer	-	-
JJ-0814-0800-0	GJ-0814-0800-4	JJ-0814-0800-G	8-7/8"	8"	Reducer	-	-
JJ-0814-0802-0	GJ-0814-0802-4	JJ-0814-0802-G	8-7/8"	8-1/8"	Reducer	-	-
JJ-0814-0804-0	GJ-0814-0804-4	JJ-0714-0804-G	8-7/8"	8-1/4"	Reducer	-	-
JJ-0814-0806-0	GJ-0814-0806-4	JJ-0814-0806-G	8-7/8"	8-3/8"	Reducer	-	-
JJ-0814-0808-0	GJ-0814-0808-4	JJ-0814-0808-G	8-7/8"	8-1/2"	Reducer	-	-
JJ-0814-0810-0	GJ-0814-0810-4	JJ-0814-0810-G	8-7/8"	8-5/8"	Reducer	-	-
JJ-0814-0812-0	GJ-0814-0812-4	JJ-0814-0812-G	8-7/8"	8-3/4"	Reducer	39285	-
JJ-0814-0814-0	GJ-0814-0814-4	JJ-0814-0814-G	8-7/8"	8-7/8"	Basic	-	-
JJ-0910-0810-0	GJ-0910-0810-4	JJ-0910-0810-G	9-5/8"	8-5/8"	Reducer	25474	350911
JJ-0910-0812-0	GJ-0910-0812-4	JJ-0910-0812-G	9-5/8"	8-3/4"	Reducer	34029	-
JJ-0910-0910-0	GJ-0910-0910-4	JJ-0910-0910-G	9-5/8"	9-5/8"	Basic	15660	350111
JJ-0910-0912-0	GJ-0910-0912-4	JJ-0910-0912-G	9-5/8"	9-3/4"	Oversize	-	-
JJ-0910-0914-0	GJ-0910-0914-4	JJ-0910-0914-G	9-5/8"	9-7/8"	Oversize	32477	-
JJ1012-0910-0	GJ-1012-0910-4	JJ-1012-0910-G	10-3/4"	9-5/8"	Reducer	33249	351011
JJ-1012-0914-0	GJ-1012-0914-4	JJ-1012-0914-G	10-3/4"	9-7/8"	Reducer	34029	350811
JJ-1012-1012-0	GJ-1012-1012-4	JJ-1012-1012-G	10-3/4"	10-3/4"	Basic	15660	350112





BJ® Standard Tooth Reducer



BJ® GRITFACE® Beveled Reducer  
Use with corrosion resistant alloy (CRA) tubulars



BJ® Fine Tooth Reducer

**Inserts for BJ® YC, HYC, MYC, Casing Elevators, etc.**

Standard Tooth #	GRITFACE®#	Bi-Dir Tooth #	Tool Size	Pipe Size	Description	OEM Ref. #	Blohm + Voss (B+V) Ref. #
JJ-1014-0914-0	GJ-1014-0914-4	JJ-1014-0914-G	10-7/8"	9-7/8"	Reducer	-	-
JJ-1014-1000-0	GJ-1014-1000-4	JJ-1014-1000-G	10-7/8"	10"	Reducer	-	-
JJ-1014-1002-0	GJ-1014-1002-4	JJ-1014-1002-G	10-7/8"	10-1/8"	Reducer	-	-
JJ-1014-1004-0	GJ-1014-1004-4	JJ-1014-1004-G	10-7/8"	10-1/4"	Reducer	-	-
JJ-1014-1006-0	GJ-1014-1006-4	JJ-1014-1006-G	10-7/8"	10-3/8"	Reducer	39288	-
JJ-1014-1008-0	GJ-1014-1008-4	JJ-1014-1008-G	10-7/8"	10-1/2"	Reducer	-	-
JJ-1014-1010-0	GJ-1014-1010-4	JJ-1014-1010-G	10-7/8"	10-5/8"	Reducer	-	-
JJ-1014-1012-0	GJ-1014-1012-4	JJ-1014-1012-G	10-7/8"	10-3/4"	Reducer	-	-
JJ-1014-1014-0	GJ-1014-1014-4	JJ-1014-1014-G	10-7/8"	10-7/8"	Basic	-	-
JJ-1112-1012-0	GJ-1112-1012-4	JJ-1112-1012-G	11-3/4"	10-3/4"	Reducer	-	-
JJ-1112-1014-0	GJ-1112-1014-4	JJ-1112-1014-G	11-3/4"	10-7/8"	Reducer	-	-
JJ-1112-1112-0	GJ-1112-1112-4	JJ-1112-1112-G	11-3/4"	11-3/4"	Basic	15660	350112
JJ-1112-1114-0	GJ-1112-1114-4	JJ-1112-1114-G	11-3/4"	11-7/8"	Oversize	32477	350012
JJ-1208-1108-0	GJ-1208-1108-4	JJ-1208-1108-G	12-1/2"	11-1/2"	Reducer	-	-
JJ-1208-1110-0	GJ-1208-1110-4	JJ-1208-1110-G	12-1/2"	11-5/8"	Reducer	-	-
JJ-1208-1112-0	GJ-1208-1112-4	JJ-1208-1112-G	12-1/2"	11-3/4"	Reducer	-	-
JJ-1208-1114-0	GJ-1208-1114-4	JJ-1208-1114-G	12-1/2"	11-7/8"	Reducer	-	-
JJ-1208-1200-0	GJ-1208-1200-4	JJ-1208-1200-G	12-1/2"	12"	Reducer	-	-
JJ-1208-1202-0	GJ-1208-1202-4	JJ-1208-1202-G	12-1/2"	12-1/8"	Reducer	-	-
JJ-1208-1204-0	GJ-1208-1204-4	JJ-1208-1204-G	12-1/2"	12-1/4"	Reducer	-	-
JJ-1208-1206-0	GJ-1208-1206-4	JJ-1208-1206-G	12-1/2"	12-3/8"	Reducer	-	-
JJ-1208-1208-0	GJ-1208-1208-4	JJ-1208-1208-G	12-1/2"	12-1/2"	Basic	-	-
JJ-1212-1112-0	GJ-1212-1112-4	JJ-1212-1112-G	12-3/4"	11-3/4"	Reducer	-	-
JJ-1212-1114-0	GJ-1212-1114-4	JJ-1212-1114-G	12-3/4"	11-7/8"	Reducer	-	-
JJ-1212-1214-0	GJ-1212-1214-4	JJ-1212-1214-G	12-3/4"	12-7/8"	Oversize	-	-
JJ-1306-1208-0	GJ-1306-1208-4	JJ-1306-1208-G	13-3/8"	12-1/2"	Reducer	-	-
JJ-1306-1212-0	GJ-1306-1212-4	JJ-1306-1212-G	13-3/8"	12-3/4"	Reducer	32700	-
JJ-1306-1308-0	GJ-1306-1308-4	JJ-1306-1308-G	13-3/8"	13-1/2"	Oversize	-	-
JJ-1306-1306-0	GJ-1306-1306-4	JJ-1306-1306-G	13-3/8"	13-3/8"	Basic	15660	-
JJ-1400-1214-0	GJ-1400-1214-4	JJ-1400-1214-G	14"	12-7/8"	Reducer	33249	351112
JJ-1400-1300-0	GJ-1400-1300-4	JJ-1400-1300-G	14"	13"	Reducer	25474	-
JJ-1400-1302-0	GJ-1400-1302-4	JJ-1400-1302-G	14"	13-1/8"	Reducer	-	-
JJ-1400-1304-0	GJ-1400-1304-4	JJ-1400-1304-G	14"	13-1/4"	Reducer	-	-
JJ-1400-1306-0	GJ-1400-1306-4	JJ-1400-1306-G	14"	13-3/8"	Reducer	32700	350612

**Inserts for BJ® YC, HYC, MYC, Casing Elevators, etc.**

<b>Standard Tooth #</b>	<b>GRITFACE®#</b>	<b>Bi-Dir Tooth #</b>	<b>Tool Size</b>	<b>Pipe Size</b>	<b>Description</b>	<b>OEM Ref. #</b>	<b>Blohm + Voss (B+V) Ref. #</b>
JJ-1400-1308-0	GJ-1400-1308-4	JJ-1400-1308-G	14"	13-1/2"	Reducer	-	-
JJ-1400-1310-0	GJ-1400-1310-4	JJ-1400-1310-G	14"	13-5/8"	Reducer	39287	350413
JJ-1400-1312-0	GJ-1400-1312-4	JJ-1400-1312-G	14"	13-3/4"	Reducer	39286	-
JJ-1400-1314-0	GJ-1400-1314-4	JJ-1400-1314-G	14"	13-7/8"	Reducer	-	-
JJ-1400-1400-0	GJ-1400-1400-4	JJ-1400-1400-G	14"	14"	Basic	15660	350113
JJ-1600-1600-0	GJ-1600-1600-4	JJ-1600-1600-G	16"	16"	Basic	-	350113
JJ-2000-1810-0	GJ-2000-1810-4	JJ-2000-1810-G	20"	18-5/8"	Reducer	-	351213

**Quantities Required for BJ® Casing Elevators (75 Ton - 350 Ton)**

<b>BJ® Tool Size</b>	<b>Pipe Size</b>	<b>75 Ton YC</b>	<b>HYC</b>	<b>175 Ton</b>	<b>350 Ton 13-3/8"</b>
3-1/2"	2-7/8"	-	-	18	-
3-1/2"	3-1/2"	-	24	18	-
4"	4"	16	-	-	-
4-1/2"	3-1/2" to 4-1/2"	16	24	27	-
5-1/2"	4-1/2" to 5-1/2"	16	36	27	36
7"	6" to 7"	24	48	-	48
7-5/8"	6-5/8", 7-3/4"	-	-	45	60
7-5/8"	7" to 7-5/8"	-	48	45	60
8-5/8"	7-5/8"	-	-	45	60
8-5/8"	7-3/4" to 8-3/4"	-	-	-	60
9-5/8"	8-5/8" to 9-3/4"	-	-	-	72
10-3/4"	9-7/8" to 10-3/4"	-	-	-	72
11-3/4"	10-3/4" to 11-3/4"	-	-	-	72
13-3/8"	12-1/2" to 13-1/2"	-	-	-	84

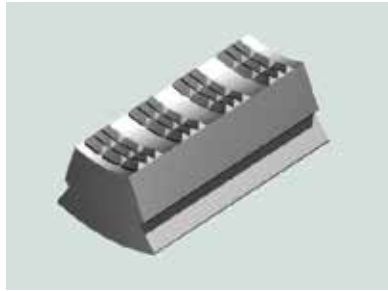
**Quantities Required for BJ® Casing Elevators (500 Ton - 1000 Ton)**

<b>BJ® Tool Size</b>	<b>Pipe Size</b>	<b>500 Ton - 13-3/8"</b>	<b>500 Ton 10-3/4"</b>	<b>1000 Ton 14"</b>
5-1/2"	4-1/2" to 5-1/2"	45	45	-
7"	6"	60	-	-
7"	6-5/8" to 7"	60	60	-
7-5/8"	6-5/8" to 7-3/4"	75	75	-
8-5/8"	7-5/8" to 8-5/8"	-	75	-
8-7/8"	7-7/8" to 8-7/8"	-	-	108
9-5/8"	8-5/8" to 9-3/4"	90	90	-
10-3/4"	9-7/8" to 10-3/4"	-	90	-
10-7/8"	9-7/8" to 10-7/8"	-	-	126
11-3/4"	10-3/4"	105	-	126
11-3/4"	10-7/8" to 11-3/4"	105	-	-
12-1/2"	11-1/2" to 12-1/2"	-	-	144
13-3/8"	12-1/2" to 13-1/2"	135	-	-
14"	13" to 13-1/4", 13-1/2", 13-3/4", 13-7/8"	-	-	162
14"	13-3/8", 13-1/2", 14"	135	-	162

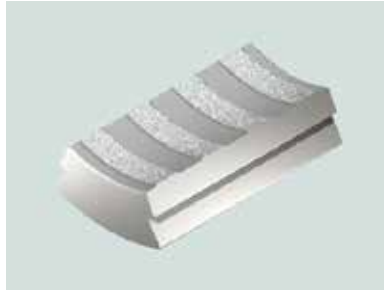


# INSERTS FOR BAASH-ROSS® DU HANDLING TOOLS

(GRITFACE® AND FULL FACE INSERTS ALSO AVAILABLE)



Baash-Ross DU Standard Tooth Insert



Baash-Ross® DU 5-1/2" **GRITFACE®** Insert  
Use with corrosion resistant alloy (CRA) tubulars



Baash-Ross® DU Full Face Insert

Standard Tooth #	GRITFACE® #	Full Face	Tool Size	Pipe Size	Description	OEM Ref. #
DU-0408-0206-0	GU-0408-0206-4	DU-0408-0206-FF	4-1/2"	2-3/8"	Reducer	7613-A-82
DU-0408-0214-0	GU-0408-0214-4	DU-0408-0214-FF	4-1/2"	2-7/8"	Reducer	7613-B-82
DU-0408-0300-0	GU-0408-0300-4	-	4-1/2"	3	Reducer	-
DU-0408-0302-0	GU-0408-0302-4	-	4-1/2"	3-1/8"	Reducer	-
DU-0408-0304-0	GU-0408-0304-4	-	4-1/2"	3-1/4"	Reducer	-
DU-0408-0308-0	GU-0408-0308-4	DU-0408-0308-FF	4-1/2"	3-1/2"	Reducer	7613-C-82
DU-0408-0312-0	GU-0408-0312-4	DU-0408-0312-FF	4-1/2"	3-3/4"	Reducer	-
DU-0408-0400-0	GU-0408-0400-4	DU-0408-0400-FF	4-1/2"	4"	Reducer	7613-FF-81
DU-0408-0402-0	GU-0408-0402-4	-	4-1/2"	4-1/8"	Reducer	-
DU-0408-0404-0	GU-0408-0404-4	DU-0408-0404-FF	4-1/2"	4-1/4"	Reducer	-
DU-0408-0406-0	GU-0408-0406-4	-	4-1/2"	4-3/8"	Reducer	-
DU-0408-0408-0	GU-0408-0408-4	DU-0408-0408-FF	4-1/2"	4-1/2"	Basic	7613-A-81
DU-0508-0308-0	GU-0508-0308-4	DU-0508-0308-FF	5-1/2"	3-1/2"	Reducer	7613-E-82
DU-0508-0312-0	GU-0508-0312-4	DU-0508-0312-FF	5-1/2"	3-3/4"	Reducer	-
DU-0508-0400-0	GU-0508-0400-4	DU-0508-0400-FF	5-1/2"	4"	Reducer	7613-D-81
DU-0508-0402-0	GU-0508-0402-4	DU-0508-0402-FF	5-1/2"	4-1/8"	Reducer	-
DU-0508-0404-0	GU-0508-0404-4	DU-0508-0404-FF	5-1/2"	4-1/4"	Reducer	-
DU-0508-0406-0	GU-0508-0406-4	DU-0508-0406-FF	5-1/2"	4-3/8"	Reducer	-
DU-0508-0408-0	GU-0508-0408-4	DU-0508-0408-FF	5-1/2"	4-1/2"	Reducer	7613-E-81
DU-0508-0412-0	GU-0508-0412-4	DU-0508-0412-FF	5-1/2"	4-3/4"	Reducer	7613-F-81
DU-0508-0500-0	GU-0508-0500-4	DU-0508-0500-FF	5-1/2"	5"	Reducer	7613-G-81
DU-0508-0508-0	GU-0508-0508-4	DU-0508-0508-FF	5-1/2"	5-1/2"	Basic	7613-H-81
DU-0508-0512-0	GU-0508-0512-4	DU-0508-0512-FF	5-1/2"	5-3/4"	Oversize	-
DU-0700-0508-0	GU-0700-0508-4	-	7"	5-1/2"	Reducer	7613-Z-81
DU-0700-0512-0	GU-0700-0512-4	DU-0700-0512-FF	7"	5-3/4"	Reducer	7613-BB-81
DU-0700-0514-0	GU-0700-0514-4	-	7"	5-7/8"	Reducer	-
DU-0700-0600-0	GU-0700-0600-4	-	7"	6"	Reducer	7613-CC-81
DU-0700-0610-0	GU-0700-0610-4	-	7"	6-5/8"	Reducer	7613-DD-81
DU-0700-0700-0	GU-0700-0700-4	-	7"	7"	Basic	7613-EE-81

Special Notes: 2-3/8" OD Pipe Size is the smallest we can manufacture for 4-1/2" Body Style Tools  
 3-1/2" OD Pipe Size is the smallest we can manufacture for 5-1/2" Body Style Tools  
 5-1/2" OD Pipe Size is the smallest we can manufacture for 7" Body Style Tools



Baash-Ross® DU Full Face Insert



Baash-Ross® DU Full Face Reducer

**Quantities Required for Baash-Ross® DU Rotary Slips**

Slip Size	Pipe Size	"DU" Regular	"DU" Long
4-1/2"	All	18	24
5-1/2"	All	18	24
7"	All	18	24

Special Notes: 2-3/8" OD Pipe Size is the smallest we can manufacture for 4-1/2" Body Style Tools  
 3-1/2" OD Pipe Size is the smallest we can manufacture for 5-1/2" Body Style Tools  
 5-1/2" OD Pipe Size is the smallest we can manufacture for 7" Body Style Tools



# INSERTS FOR WOOLLEY



WOOLLEY B Insert



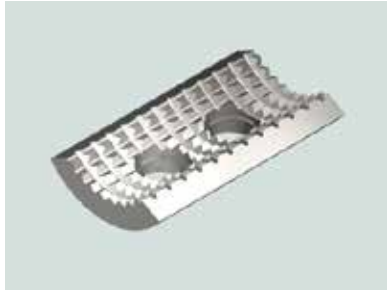
WOOLLEY A Insert

## Inserts for WOOLLEY

Standard Tooth #	GRITFACE® #	Description	OEM Ref. #
WW-0408-0206-FF	GW-0408-0206-4	WOOLLEY B 4-1/2" x 2-3/8"	757-044-0123
WW-0408-0214-FF	GW-0408-0214-4	WOOLLEY B 4-1/2" x 2-7/8"	757-044-0127
WW-0408-0308-FF	GW-0408-0308-4	WOOLLEY B 4-1/2" x 3-1/2"	757-044-0134
WW-0408-0400-FF	GW-0408-0400-4	WOOLLEY B 4-1/2" x 4"	757-044-0140
WW-0408-0408-FF	GW-0408-0408-4	WOOLLEY B 4-1/2" x 4-1/2"	757-044-0144
WW-0508-0700-0	-	WOOLLEY A 5-1/2" x 7"	797-000-0000



# INSERTS FOR KELCO™ HANDLING TOOLS



Kelco™ K-25 Standard Tooth Insert



Kelco™ K-25 **GRITFACE®** Insert  
Use with corrosion resistant alloy (CRA) tubulars

## Inserts for Kelco™ K-20 Style Tool (Fine tooth inserts also available)

(1" OD Pipe Size is the smallest we can manufacture)

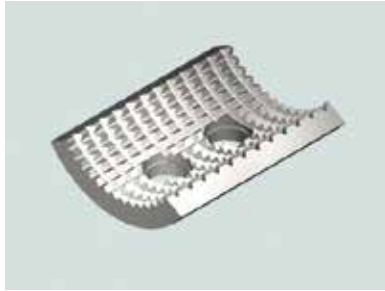
Standard Tooth #	GRITFACE® #	Description	Quantity	OEM Ref. #
KK-0200-0100-0	GK-0200-0100-5	1" (1.315") Insert	3	04-120
KK-0200-0104-0	GK-0200-0104-5	1-1/4" (1.660") Insert	3	04-121
KK-0200-0108-0	GK-0200-0108-5	1-1/2" (1.900") Insert	3	04-122
KK-0200-0201-0	GK-0200-0201-5	2-1/16" Insert	3	04-123
KK-0200-0204-0	GK-0200-0204-5	1-1/4" (1.660") Insert	3	-
KK-0200-0206-0	GK-0200-0206-5	2-3/8" Insert	3	04-124

## Inserts for Kelco™ K-25 Style Tool (Fine tooth inserts also

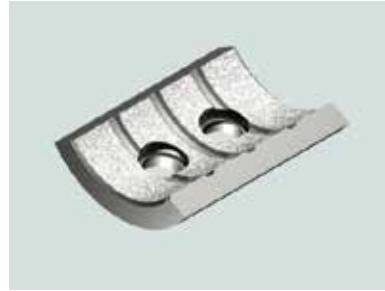
available) (1" OD Pipe Size is the smallest we can manufacture)

Standard Tooth #	GRITFACE® #	Description	Quantity	OEM Ref. #
KK-0250-0100-0	GK-0250-0100-5	1" (1.315") Insert	3	05-120
KK-0250-0104-0	GK-0250-0104-5	1-1/4" (1.660") Insert	3	05-121
KK-0250-0108-0	GK-0250-0108-5	1-1/2" (1.900") Insert	3	05-122
KK-0250-0109-0	GK-0250-0109-5	1-9/16" Insert	3	-
KK-0250-0113-0	GK-0250-0113-5	1-13/16" Insert	3	-
KK-0250-0201-0	GK-0250-0201-5	2-1/16" Insert	3	05-123
KK-0250-0202-0	GK-0250-0202-5	2-1/8" Insert	3	-
KK-0250-0204-0	GK-0250-0204-5	2-1/4" Insert	3	-
KK-0250-0206-0	GK-0250-0206-5	2-3/8" Insert	3	05-124
KK-0250-0208-0	GK-0250-0208-5	2-1/2" Insert	3	05-125
KK-0250-0211-0	GK-0250-0211-5	2-11/16" Insert	3	-
KK-0250-02.776-0	GK-0250-02.776-5	2.776" Insert	3	-
KK-0250-0214-0	GK-0250-0214-5	2-7/8" Insert	3	05-128





Kelco™ K-30 Standard Tooth Insert



Kelco™ K-30 **GRITFACE®** Insert  
Use with corrosion resistant alloy (CRA) tubulars

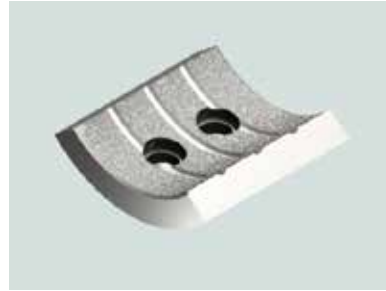
**Inserts for Kelco™ K-30 Style Tool (Fine tooth inserts also available)**

Standard Tooth #	GRITFACE® #	Description	Quantity	OEM Ref. #
KK-0300-0108-0	GK-0300-0108-5	1-1/2" (1.900") Insert	3	06-134
KK-0300-0110-0	GK-0300-0110-5	1-5/8" Insert	3	-
KK-0300-0111-0	GK-0300-0111-5	1-11/16" Insert	3	-
KK-0300-0112-0	GK-0300-0112-5	1-3/4" Insert	3	-
KK-0300-0113-0	GK-0300-0113-5	1-13/16" Insert	3	-
KK-0300-0200-0	GK-0300-0200-5	2" Insert	3	-
KK-0300-0201-0	GK-0300-0201-5	2-1/16" Insert	3	06-119
KK-0300-0202-0	GK-0300-0202-5	2-1/8" Insert	3	-
KK-0300-0204-0	GK-0300-0204-5	2-1/4" Insert	3	-
KK-0300-0206-0	GK-0300-0206-5	2-3/8" Insert	3	06-120
KK-0300-0208-0	GK-0300-0208-5	2-1/2" Insert	3	-
KK-0300-0210-0	GK-0300-0210-5	2-5/8" Insert	3	-
KK-0300-02718-0	GK-0300-02718-5	2.718" Insert	3	-
KK-0300-02776-0	GK-0300-02776-5	2.776" Insert	3	-
KK-0300-0212-0	GK-0300-0212-5	2-3/4" Insert	3	-
KK-0300-0214-0	GK-0300-0214-5	2-7/8" Insert	3	06-121
KK-0300-0300-0	GK-0300-0300-5	3" Insert	3	06-135
KK-0300-0301-0	GK-0300-0301-5	3-1/16" Insert	3	06-122
KK-0300-0302-0	GK-0300-0302-5	3-1/8" Insert	3	06-123
KK-0300-0304-0	GK-0300-0304-5	3-1/4" Insert	3	06-124
KK-0300-0306-0	GK-0300-0306-5	3-3/8" Insert	3	06-130
KK-0300-0308-0	GK-0300-0308-5	3-1/2" Insert	3	06-125
KK-0300-0310-0	GK-0300-0310-5	3-5/8" Insert	3	-
KK-0300-03668-0	GK-0300-03668-5	3.668" Insert	3	06-126
KK-0300-03730-0	GK-0300-03730-5	3.730" Insert	3	-
KK-0300-0312-0	GK-0300-0312-5	3-3/4" Insert	3	06-127
KK-0300-03866-0	GK-0300-03866-5	3.866" Insert	3	-
KK-0300-0314-0	GK-0300-0314-5	3-7/8" Insert	3	06-131
KK-0300-0400-0	GK-0300-0400-5	4" Insert	3	-

Special Notes: 1-1/2" OD Pipe Size is the smallest we can manufacture  
4" OD Pipe Size is the largest we can manufacture



Kelco™ K-50 Standard Tooth Insert



Kelco™ K-50 **GRITFACE®** Insert  
Use with corrosion resistant alloy (CRA) tubulars

**Inserts for Kelco™ K-50 Style Tool (Fine tooth inserts also available)**

(2-3/8" OD Pipe Size is the smallest we can manufacture)

Standard Tooth #	GRITFACE® #	Description	Quantity	OEM Ref. #
KK-0500-0206-0	GK-0500-0206-5	2-3/8" Insert	3	-
KK-0500-0210-0	GK-0500-0210-5	2-5/8" Insert	3	-
KK-0500-0214-0	GK-0500-0214-0	2-7/8" Insert	3	06-575
KK-0500-0304-0	GK-0400-0304-5	3-1/4" Insert	3	-
KK-0500-0306-0	GK-0500-0306-5	3-3/8" Insert	3	-
KK-0500-0308-0	GK-0500-0308-5	3-1/2" Insert	3	06-576
KK-0500-0310-0	GK-0500-0310-5	3-5/8" Insert	3	06-577
KK-0500-0312-0	GK-0500-0312-5	3-3/4" Insert	3	-
KK-0500-0314-0	GK-0500-0314-5	3-7/8" Insert	3	-
KK-0500-0400-0	GK-0500-0400-5	4" Insert	3	06-578
KK-0500-0401-0	GK-0500-0401-5	4-1/16" Insert	3	-
KK-0500-0402-0	GK-0500-0402-5	4-1/8" Insert	3	06-579
KK-0500-0404-0	GK-0500-0404-5	4-1/4" Insert	3	-
KK-0500-0406-0	GK-0500-0406-5	4-3/8" Insert	3	-
KK-0500-0408-0	GK-0500-0408-5	4-1/2" Insert	3	06-580
KK-0500-0412-0	GK-0500-0412-5	4-3/4" Insert	3	06-581
KK-0500-0414-0	GK-0500-0414-5	4-7/8" Insert	3	-
KK-0500-0500-0	GK-0500-0500-5	5" Insert	3	06-582
KK-0500-0504-0	GK-0500-0504-5	5-1/4" Insert	3	-
KK-0500-0506-0	GK-0500-0506-5	5-3/8" Insert	3	-
KK-0500-0508-0	GK-0500-0508-5	5-1/2" Insert	3	06-583





Kelco™ K-70 Standard Tooth Insert



Kelco™ K-70 **GRITFACE®** Insert  
Use with corrosion resistant alloy (CRA) tubulars

**Inserts for Kelco™ K-70 Style Tool (Fine tooth inserts also available)**

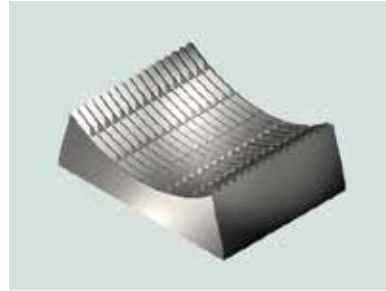
(2-3/8" OD Pipe Size is the smallest we can manufacture)

Standard Tooth #	GRITFACE® #	Description	Quantity	OEM Ref. #
KK-0700-0308-0	GK-0700-0308-5	3-1/2" Insert	3	06-758
KK-0700-0312-0	GK-0700-0312-5	3-3/4" Insert	3	-
KK-0700-0400-0	GK-0700-0400-5	4" Insert	3	-
KK-0700-0408-0	GK-0700-0408-5	4-1/2" Insert	3	06-757
KK-0700-0412-0	GK-0700-0412-5	4-3/4" Insert	3	06-755
KK-0700-0413-0	GK-0700-0413-5	4-13/16" Insert	3	-
KK-0700-0415-0	GK-0700-0415-5	4-15/16" Insert	3	-
KK-0700-0500-0	GK-0700-0500-5	5" Insert	3	06-754
KK-0700-0504-0	GK-0700-0504-5	5-1/4" Insert	3	-
KK-0700-0508-0	GK-0700-0508-5	5-1/2" Insert	3	06-753
KK-0700-0512-0	GK-0700-0512-5	5-3/4" Insert	3	06-759
KK-0700-0514-0	GK-0700-0514-5	5-7/8" Insert	3	-
KK-0700-0600-0	GK-0700-0600-5	6" Insert	3	06-752
KK-0700-06050-0	GK-0700-06050-5	6.050" Insert	3	-
KK-0700-0602-0	GK-0700-0602-5	6-1/8" Insert	3	-
KK-0700-0604-0	GK-0700-0604-5	6-1/4" Insert	3	-
KK-0700-0605-0	GK-0700-0605-5	6-5/16" Insert	3	-
KK-0700-0608-0	GK-0700-0608-5	6-1/2" Insert	3	-
KK-0700-0610-0	GK-0700-0610-5	6-5/8" Insert	3	06-751
KK-0700-0614-0	GK-0700-0614-5	6-7/8" Insert	3	-
KK-0700-0700-0	GK-0700-0700-5	7" Insert	3	06-750

# INSERTS FOR HYDRA RIG BOWL & SLIP



Hydra Rig 150 Bowl & Slip Insert



Hydra Rig 225 Bowl & Slip Insert

## Inserts for Hydra Rig 150 Bowl & Slip (1" OD Pipe Size is the smallest that we can manufacture)

Standard Tooth #	GRITFACE® #	Description	Quantity	OEM Ref. #
HH-0214-0100-0	GH-0214-0100-4	2-7/8" x 1" (1.315")	8	6006
HH-0214-0104-0	GH-0214-0104-4	2-7/8" x 1-1/4" (1.66")	8	6005
HH-0214-0108-0	GH-0214-0108-4	2-7/8" x 1-1/2" (1.900")	8	6004
HH-0214-0200-0	GH-0214-0200-4	2-7/8" x 2"	8	-
HH-0214-0201-0	GH-0214-0201-4	2-7/8" x 2-1/16"	8	6003
HH-0214-0206-0	GH-0214-0206-4	2-7/8" x 2-3/8"	8	6002
HH-0214-0214-0	GH-0214-0214-4	2-7/8" x 2-7/8"	8	6001
HH-0214-0302-0	GH-0214-0302-4	2-7/8" x 3-1/8"	8	-
HH-0214-0308-0	GH-0214-0308-4	2-7/8" - 3-1/2"	8	6009

## Inserts for Hydra Rig 225 Bowl & Slip (2-3/8" OD Pipe Size is the smallest that we can manufacture)

Standard Tooth #	GRITFACE® #	Description	Quantity	OEM Ref. #
HH-0508-0206-0	GH-0508-0206-4	5-1/2" x 2-3/8"	12	6157
HH-0508-0214-0	GH-0508-0214-4	5-1/2" x 2-7/8"	12	6156
HH-0508-0302-0	GH-0508-0302-4	5-1/2" x 3-1/8"	12	-
HH-0508-0308-0	GH-0508-0308-4	5-1/2" x 3-1/2"	12	6155
HH-0508-0400-0	GH-0508-0400-4	5-1/2" x 4"	12	6154
HH-0508-0408-0	GH-0508-0408-4	5-1/2" x 4-1/2"	12	6153
HH-0508-0412-0	GH-0508-0412-4	5-1/2" x 4-3/4"	12	-
HH-0508-0500-0	GH-0505-0500-4	5-1/2" x 5"	12	6152
HH-0508-0508-0	GH-0508-0508-4	5-1/2" x 5-1/2"	12	6151



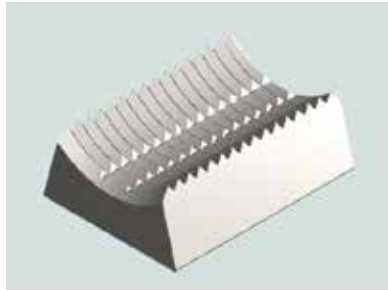


Hydra Rig 300 Bowl & Slip Insert

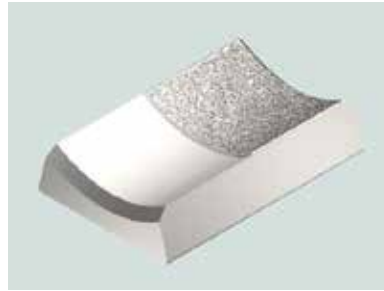
**Inserts for Hydra Rig 300 Bowl & Slip** (2-7/8" OD Pipe Size is the smallest that we can manufacture)

<b>Standard Tooth #</b>	<b>GRITFACE® #</b>	<b>Description</b>	<b>Quantity</b>	<b>OEM Ref. #</b>
HH-0710-0214-0	GH-0710-0214-4	7-5/8" x 2-7/8"	4	6181
HH-0710-0308-0	GH-0710-0308-4	7-5/8" x 3-1/2"	4	6182
HH-0710-0400-0	GH-0710-0400-4	7-5/8" x 4"	4	6179
HH-0710-0408-0	GH-0710-0408-4	7-5/8" x 4-1/2"	4	6178
HH-0710-0500-0	GH-0710-0500-4	7-5/8" x 5"	4	6180
HH-0710-0508-0	GH-0710-0508-4	7-5/8" x 5-1/2"	4	6176
HH-0710-0512-0	GH-0710-0512-4	7-5/8" x 5-3/4"	4	6177
HH-0710-0600-0	GH-0710-0600-4	7-5/8" x 6"	4	6175
HH-0710-0608-0	GH-0710-0608-4	7-5/8" x 6-1/2"	4	-
HH-0710-0610-0	GH-0710-0610-4	7-5/8" x 6-5/8"	4	6174
HH-0710-0700-0	GH-0710-0700-4	7-5/8" x 7"	4	6172
HH-0710-0710-0	GH-0710-0710-4	7-5/8" x 7-5/8"	4	6171

# INSERTS FOR BILCO HANDLING TOOLS



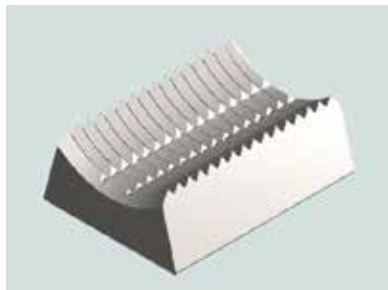
Bilco Standard Tooth Insert for Dual Tools



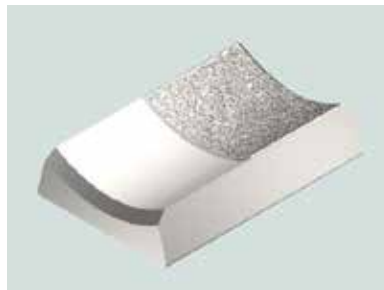
Bilco **GRITFACE®** Insert for Dual Tools  
Use with corrosion resistant alloy (CRA) tubulars

## Inserts for Bilco Dual Tools (2-3/8" OD Pipe Size is the smallest that we can manufacture)

Standard Tooth #	GRITFACE® #	Description	Quantity	OEM Ref. #
FF-0308-0206-0	GF-0308-0206-4	3-1/2" x 2-3/8" Insert	36	6603
FF-0308-0214-0	GF-0308-0214-4	3-1/2" x 2-7/8" Insert	36	6602
FF-0308-0308-0	GF-0308-0308-4	3-1/2" x 3-1/2" Insert	36	6601
FF-0508-0206-0	GF-0508-0206-4	5-1/2" x 2-3/8" Insert	48	6626W
FF-0508-0214-0	GF-0508-0214-4	5-1/2" x 2-7/8" Insert	48	6624W
FF-0508-0308-0	GF-0508-0308-4	5-1/2" x 3-1/2" Insert	48	6623W
FF-0508-0400-0	GF-0508-0400-4	5-1/2" x 4" Insert	48	6625W
FF-0508-0408-0	GF-0508-0408-4	5-1/2" x 4-1/2" Insert	48	6622W
FF-0508-0500-0	GF-0508-0500-4	5-1/2" x 5" Insert	48	6621W
FF-0508-0508-0	GF-0508-0508-4	5-1/2" x 5-1/2" Insert	48	-



Bilco 5-1/2" x 4" Insert for Precision Slips



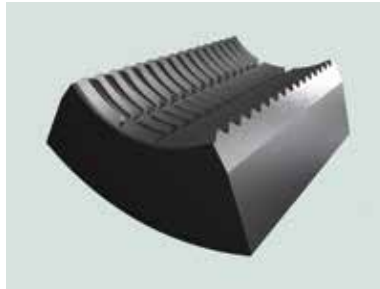
Bilco 5-1/2" x 4-1/2" Insert for Precision Slips

## Inserts for Bilco Precision Slips and Elevators

Standard Tooth #	Description	Quantity	OEM Ref. #
FF-0308-0206-WP	3-1/2" x 2-3/8" Wide Body Insert	18	-
FF-0308-0214-WP	3-1/2" x 2-7/8" Wide Body Insert	18	6602WP
FF-0308-0308-WP	3-1/2" x 3-1/2" Wide Body Insert	18	6601WP
FF-0408-0408-WP	4-1/2" x 4-1/2" Wide Body Insert	18	-
FF-0508-0400-WP	5-1/2" x 4" Wide Body Insert	18	-
FF-0508-0408-WP	5-1/2" x 4-1/2" Wide Body Insert	18	6622WP
FF-0508-0500-WP	5-1/2" x 5" Wide Body Insert	18	6621WP
FF-0508-0508-WP	5-1/2" x 5-1/2" Wide Body Insert	18	-



# INSERTS FOR 3-1/2" TS-100 SPIDER



TS100 Spider Bidirectional Tooth Insert

**Inserts for TS-100 Spider** (1" OD Pipe Size is the smallest that we can manufacture)

Standard Tooth #	Tool Size	Pipe Size	Description	Quantity	OEM Ref. #
DU-0308-0100-0	3-1/2"	1" (1.315")	Reducer	9	7502-A-5076
DU-0308-0104-0	3-1/2"	1-1/4" (1.660")	Reducer	9	7502-A-5075
DU-0308-0108-0	3-1/2"	1-1/2" (1.900")	Reducer	9	7502-A-5074
DU-0308-0200-0	3-1/2"	2"	Reducer	9	7502-A-5073
DU-0308-0201-0	3-1/2"	2-1/16"	Reducer	9	7502-A-5072
DU-0308-0206-0	3-1/2"	2-3/8"	Reducer	9	7502-A-5071
DU-0308-0214-0	3-1/2"	2-7/8"	Reducer	9	7502-A-5070
DU-0308-0302-0	3-1/2"	3-1/8"	Reducer	9	7502-A-318
DU-0308-0304-0	3-1/2"	3-1/4"	Reducer	9	7502-A-314
DU-0308-0306-0	3-1/2"	3-3/8"	Reducer	9	7502-A-338
DU-0308-0308-0	3-1/2"	3-1/2"	Basic	9	7502-A-5069



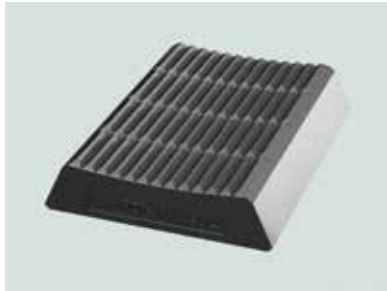
# INSERTS FOR GUIBERSON F-1/H-1 BOWL & SLIP



Guiberson Insert

Standard Tooth #	GRITFACE® #	Tool Size	Pipe Size	Description	Qty F/H	OEM Ref. #
BB-0214-0206-0	GB-0214-0206-4	2-7/8"	2-3/8"	Reducer	18/12	42586 / 42597
BB-0214-0214-0	GB-0214-0214-4	2-7/8"	2-7/8"	Basic	18/12	42587 / 42598

# INSERTS FOR ST-80 IRON ROUGHNECK TOOLS



ST-80 Iron Roughneck Lower Insert



ST-80 Iron Roughneck Upper Insert

Standard Part #	Description	Quantity	OEM Ref. #
PDT-ST80	ST-80 Upper Insert	2	30160380-500
PDT-ST80 Kit	Includes 2 dies and replacement hardware	1	-
PDT-30160382	ST-80 Lower Insert	2	30160382
PDT-301603820-KIT	Includes 2 dies and replacement hardware	1	-
PDT-IDM-STANDARD	Die VARCO® Iron Derrick Man Power Gripper	-	-
PDT-81788	Die VARCO® Pipe Handler Insert 3/4" x 3-1/16" x 5"	-	-



# INSERTS FOR CAVINS & OIL COUNTRY HANDLING TOOLS

(GRITFACE®, FINE PYRAMID TOOTH, AND BIDIRECTIONAL INSERTS ALSO AVAILABLE)



Cavins Uni-Directional  
Standard Tooth Insert



Cavins **GRITFACE®** Insert  
Use with corrosion resistant  
alloy (CRA) tubulars

## Inserts for Cavins® Type C Slip (3-1/2" body)

Standard Tooth #	GRITFACE® #	Bidirectional #	Description	OEM Ref. #
CC-0308-0206-0	GCC-0308-0206-4	CC-0308-0206-G	3-1/2" x 2-3/8" Insert	TC-651-3-1/2 X 2-3/8
CC-0308-0214-0	GCC-0308-0214-4	CC-0308-0214-G	3-1/2" x 2-7/8" Insert	TC-651-3-1/2 X 2-7/8
CC-0308-0308-0	GCC-0308-0308-4	CC-0308-0308-G	3-1/2" x 3-1/2" Insert	TC-650-3-1/2



Cavins 4-1/2" Fine Tooth Insert (Reducer)



Cavins 4-1/2" **GRITFACE®** Insert (Reducer)  
Use with corrosion resistant  
alloy (CRA) tubulars

## Inserts for Cavins® Type C Slip (4-1/2" body)

Standard Tooth #	GRITFACE® #	Bidirectional #	Description	OEM Ref. #
CC-0408-0308-0	GCC-0408-0308-4	CC-0408-0308-G	4-1/2" x 3-1/2" Insert	TC-651-4-1/2 X 3-1/2
CC-0408-0400-0	GCC-0408-0400-4	CC-0408-0404-G	4-1/2" x 4" Insert	TC-651-4-1/2 X 4
CC-0408-0408-0	GCC-0408-0408-4	CC-0408-0408-G	4-1/2" x 4-1/2" Insert	TC-651-4-1/2

## Inserts for Cavins® Type F Slip (3-1/2" body) (2-3/8" OD Pipe Size is the smallest that we can manufacture)

Standard Tooth #	GRITFACE® #	Bidirectional #	Description	OEM Ref. #
CF-0308-0206-0	GCF-0308-0206-4	CF-0308-0206-G	3-1/2" x 2-3/8" Insert	TF-651-3-1/2 X 2-3/8
CF-0308-0214-0	GCF-0308-0214-4	CF-0308-0214-G	3-1/2" x 2-7/8" Insert	TF-651-3-1/2 X 2-7/8
CF-0308-0308-0	GCF-0308-0308-4	CF-0308-0308-G	3-1/2" x 3-1/2" Insert	TF-650-3-1/2

**Inserts for Cavins® Type F Slip (5-1/2" body) (4" OD Pipe Size is the smallest that we can manufacture)**

<b>Standard Tooth</b>				
#	GRITFACE® #	Bidirectional #	Description	OEM Ref. #
CF-0508-0400-0	GCF-0508-0400-4	CF-0508-0400-G	5-1/2" x 4" Insert	TF-651-5-1/2 X 4
CF-0508-0408-0	GCF-0508-0408-4	CF-0508-0408-G	5-1/2" x 4-1/2" Insert	TF-651-5-1/2 X 4-1/2
CF-0508-0500-0	GCF-0508-0500-4	CF-0508-0500-G	5-1/2" x 5" Insert	TF-651-5-1/2 X 5
CF-0508-0508-0	GCF-0508-0508-4	CF-0508-0508-G	5-1/2" x 5-1/2" Insert	TF-651-5-1/2

**Inserts for Cavins® Type F Slip (7-5/8" body) (5-7/8" OD Pipe Size is the smallest that we can manufacture)**

<b>Standard Tooth</b>				
#	GRITFACE® #	Bidirectional #	Description	OEM Ref. #
CF-0710-0514-0	GCF-0710-0514-4	CF-0710-0514-G	7-5/8" x 5-7/8" Insert	-
CF-0710-0600-0	GCF-0710-0600-4	CF-0710-0600-G	7-5/8" x 6" Insert	-
CF-0710-0608-0	GCF-0710-0608-4	CF-0710-0608-G	7-5/8" x 6-1/2" Insert	-
CF-0710-0610-0	GCF-0710-0610-4	CF-0710-0610-G	7-5/8" x 6-5/8" Insert	TF-651-7-5/8X 6-5/8
CF-0710-0700-0	GCF-0710-0700-4	CF-0710-0700-G	7-5/8" x 7" Insert	TF-651-7-5/8 X 7
CF-0710-0710-0	GCF-0710-0710-4	CF-0710-0710-G	7-5/8" x 7-5/8" Insert	TF-650-7-5/8



Fine Tooth 3-1/2" x 3-1/2" Uni-Directional Insert for Cavins Type F



GRITFACE® 5-1/2" x 5" Insert for Oil Country Type E Use with corrosion resistant alloy (CRA) tubulars

**Inserts for Oil Country Type E Slip (3-1/2" body) (2-3/8" OD Pipe Size is the smallest that we can manufacture)**

Standard Tooth #	GRITFACE® #	Bidirectional #	Description	OEM Ref. #
CE-0308-0206-0	GCE-0308-0206-4	CE-0308-0206-G	3-1/2" x 2-3/8" Insert	66651-1ST
CE-0308-0214-0	GCE-0308-0214-4	CE-0308-0214-G	3-1/2" x 2-7/8" Insert	66651-2ST
CE-0308-0308-0	GCE-0308-0308-4	CE-0308-0308-G	3-1/2" x 3-1/2" Insert	66651-3ST

**Inserts for Oil Country Type E Slip (5-1/2" body) (4" OD Pipe Size is the smallest that we can manufacture)**

Standard Tooth #	GRITFACE® #	Bidirectional #	Description	OEM Ref. #
CE-0508-0400-0	GCE-0508-0400-4	CE-0508-0400-G	5-1/2" x 4" Insert	66653-1
CE-0508-0408-0	GCE-0508-0408-4	CE-0508-0408-G	5-1/2" x 4-1/2" Insert	66653-2
CE-0508-0500-0	GCE-0508-0500-4	CE-0508-0500-G	5-1/2" x 5" Insert	66653-3
CE-0508-0508-0	GCE-0508-0508-4	CE-0508-0508-G	5-1/2" X 5-1/2" Insert	66653-4

**Inserts for Oil Country Type E Slip (7" body) (5-1/2" OD Pipe Size is the smallest that we can manufacture)**

Standard Tooth #	GRITFACE® #	Bidirectional #	Description	OEM Ref. #
CE-0700-0508-0	GCE-0700-0508-4	CE-0700-0508-G	7" x 5-1/2" Insert	-
CE-0700-0610-0	GCE-0700-0610-4	CE-0700-0610-G	7" x 6-5/8" Insert	66654-2ST
CE-0700-0700-0	GCE-0700-0700-4	CE-0700-0700-G	7" x 7" Insert	66654-3ST



# SAFETY CLAMPS

## "T" SAFETY CLAMPS



Standard "T" Safety Clamp



GRITFACE® "T" Safety Clamp

Part # - GRITFACE®	TS-0101-0408-1
Part #	SS-0101-0408-0
OEM Ref. #	7624-A-21
Can be used in the following pipe sizes:	
Pipe Outer Dimension Size	Number of Safety Clamps Required
From 1-1/8" to 2"	4
From 2-1/8" to 3-1/4"	5
From 3-1/2" to 4-1/2"	6

# "C" SAFETY CLAMPS



Standard "C" Safety Clamp



GRITFACE® "C" Safety Clamp

Part # - GRITFACE®	TS-0312-3100-1
Part #	SS-0312-3100-0
OEM Ref #	7624-A-4
Can be used in the following pipe sizes:	
Pipe Outer Dimension Size	Number of Safety Clamps Required
From 3-3/4" to 4-5/8"	7
From 4-1/2" to 5-5/8"	8
From 5-1/2" to 6-5/8"	9
From 6-1/2" to 7-5/8"	10
From 7-1/2" to 8-5/8"	11
From 8-1/2" to 9-5/8"	12
From 9-1/2" to 10-5/8"	13
From 10-1/2" to 11-5/8"	14
From 11-1/2" to 12-5/8"	15
From 12-1/2" to 13-5/8"	16
From 13-1/2" to 14-5/8"	17
From 14-1/2" to 15-5/8"	18
From 15-1/2" to 17"	18
From 16-1/2" to 18"	19
From 17-1/2" to 19"	20
From 18-1/2" to 20"	21
From 19-1/2" to 21"	22



# "MP, MPR" SAFETY CLAMPS



Standard "MP" Safety Clamp



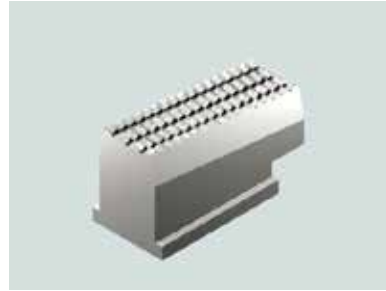
GRITFACE® "MP" Safety Clamp

Part # to GRITFACE®	TS-0408-3000-1
Part #	SS-0408-3000-0
OEM Ref #	3310
Can be used in the following pipe sizes:	
Pipe Outer Dimension Size	Number of Safety Clamps Required
From 4-1/2" to 5-5/8"	8
From 5-1/2" to 7"	9
From 6-3/4" to 8-1/4"	10
From 8" to 9-1/4"	11
From 9-1/4" to 10-1/2"	12
From 10-1/2" to 11-1/2"	13
From 11-1/2" to 12-1/2"	14
From 12-1/2" to 13-5/8"	15
From 13-5/8" to 14-3/4"	16
From 14-3/4" to 15-7/8"	17
From 15-7/8" to 17"	18
From 17" to 18-1/2"	19
From 18-1/8" to 19-3/8"	20
From 19-3/8" to 20-3/8"	20
From 20-3/8" to 21-1/2"	21
From 21" to 22-5/8"	22
From 22-5/8" to 23-3/4"	23
From 23-3/4" to 24-7/8"	24
From 24-7/8" to 26"	25
From 26" to 27-1/8"	26
From 29-3/8" to 30-1/2"	29

# "MPS" SAFETY CLAMPS



Standard "MPS" Safety Clamp



**GRITFACE®** "MPS" Safety Clamp

Part # - <b>GRITFACE®</b>	TS-0214-0500-1
Part #	SS-0214-0500-0
OEM Ref #	3333
Can be used in the following pipe sizes:	
Pipe Outer Dimension Size	Number of Safety Clamps Required
From 2-7/8" to 4-1/8"	8
From 4" to 5"	9



# ECKEL TONG DIES

## Dies for 4-1/2" Hydra-Shift and 4-1/2" UHT Tong

(We can manufacture all sizes which fit within the size capabilities of these tongs)

Standard Tooth #	Fine Tooth #	GRITFACE® #	Description	OEM Ref. #
EE-0408L-0206-0	EE-0408L-0206-F	GE-0408L-0206-5	4-1/2" x 2-3/8" Wrap Around	106490
EE-0408L-0214-0	EE-0408L-0214-F	GE-0408L-0214-5	4-1/2" x 2-7/8" Wrap Around	106489
EE-0408L-0308-0	EE-0408L-0308-F	GE-0408L-0308-5	4-1/2" x 3-1/2" Wrap Around	106488
EE-0408L-0400-0	EE-0408L-0400-F	GE-0408L-0400-5	4-1/2" x 4" Wrap Around	106885
EE-0408L-0408-0	EE-0408L-0408-F	GE-0408L-0408-5	4-1/2" x 4-1/2" Wrap Around	106884

## Dies for 4-1/2" Hydra-Shift and 4-1/2" UHT Backup

(We can manufacture all sizes which fit within the size capabilities of these backups)

Standard Tooth #	Fine Tooth #	GRITFACE® #	Description	OEM Ref. #
EE-NNB-0206-0	EE-NNB-0206-F	GE-NNB-0206-5	2-3/8" NNB	112985
EE-NNB-0214-0	EE-NNB-0214-F	GE-NNB-0214-5	2-7/8" NNB	112986
EE-NNB-0308-0	EE-NNB-0308-F	GE-NNB-0308-5	3-1/2" NNB	112987
EE-NNB-0400-0	EE-NNB-0400-F	GE-NNB-0400-5	4" NNB	112988
EE-NNB-0408-0	EE-NNB-0408-F	GE-NNB-0408-5	4-1/2" NNB	113192

## Dies for 5-1/2" Hydra-Shift LS and 5-1/2" Hydra-Shift VS Tong

(We can manufacture all sizes which fit within the size capabilities of these tongs)

Standard Tooth #	Fine Tooth #	GRITFACE® #	Description	OEM Ref. #
EE-0508P-0206-0	EE-0508P-0206-F	GE-0508P-0206-5	5-1/2" X 2-3/8" WRAP AROUND	107482
EE-0508P-0214-0	EE-0508P-0214-F	GE-0508P-0214-5	5-1/2" X 2-7/8" WRAP AROUND	107481
EE-0508P-0308-0	EE-0508P-0308-F	GE-0508P-0308-5	5-1/2" X 3-1/2" WRAP AROUND	107480
EE-0508P-0400-0	EE-0508P-0400-F	GE-0508P-0400-5	5-1/2" X 4" WRAP AROUND	107479
EE-0508P-0408-0	EE-0508P-0408-F	GE-0508P-0408-5	5-1/2" X 4-1/2" WRAP AROUND	107444
EE-0508P-0500-0	EE-0508P-0500-F	GE-0508P-0500-5	5-1/2" X 5" WRAP AROUND	107516
EE-0508P-0508-0	EE-0508P-0508-F	GE-0508P-0508-5	5-1/2" X 5-1/2" WRAP AROUND	107383
EE-0508P-06050-0	EE-0508P-06050-F	GE-0508P-06050-5	5-1/2" X 6.050" WRAP AROUND	

## Dies for 5-1/2" Hydra-Shift LS and 5-1/2" Hydra-Shift VS Backup

(We can manufacture all sizes which fit within the size capabilities of these backups)

Standard Tooth #	Fine Tooth #	GRITFACE® #	Description	OEM Ref. #
EE-OTB-0206-0	EE-OTB-0206-F	GE-OTB-0206-5	2-3/8" WRAP AROUND	113073
EE-OTB-0214-0	EE-OTB-0214-F	GE-OTB-0214-5	2-7/8" WRAP AROUND	113074
EE-OTB-0308-0	EE-OTB-0308-F	GE-OTB-0308-5	3-1/2" WRAP AROUND	113075
EE-OTB-0400-0	EE-OTB-0400-F	GE-OTB-0400-5	4" WRAP AROUND	113076
EE-OTB-0408-0	EE-OTB-0408-F	GE-OTB-0408-5	4-1/2" WRAP AROUND	113077
EE-OTB-0500-0	EE-OTB-0500-F	GE-OTB-0500-5	5" WRAP AROUND	113078
EE-OTB-0508-0	EE-OTB-0508-F	GE-OTB-0508-5	5-1/2" WRAP AROUND	107383
EE-OTB-06050-0	EE-OTB-06050-F	GE-OTB-06050-5	6.050" WRAP AROUND	-



**Dies for 5-1/2" UHT / UHT HS and 8-5/8" Hydra-Shift HT Tong**  
**(We can manufacture all sizes which fit within the size capabilities of these tongs)**

<b>Standard Tooth #</b>	<b>Fine Tooth #</b>	<b>GRITFACE® #</b>	<b>Description</b>	<b>OEM Ref. #</b>
EE-Z-0214-0	EE-Z-0214-F	GE-Z-0214-5	2-7/8" WRAP AROUND	-
EE-Z-0308-0	EE-Z-0308-F	GE-Z-0308-5	3-1/2" WRAP AROUND	-
EE-Z-0400-0	EE-Z-0400-F	GE-Z-0400-5	4" WRAP AROUND	-
EE-Z-0408-0	EE-Z-0408-F	GE-Z-0408-5	4-1/2" WRAP AROUND	-
EE-Z-0500-0	EE-Z-0500-F	GE-Z-0500-5	5" WRAP AROUND	-

**Dies for 5-1/2" UHT / UHT HS and 8-5/8" Hydra-Shift HT Backup**  
**(We can manufacture all sizes which fit within the size capabilities of these backups)**

<b>Standard Tooth #</b>	<b>Fine Tooth #</b>	<b>GRITFACE® #</b>	<b>Description</b>	<b>OEM Ref. #</b>
EE-ZTB-0214-0	EE-ZTB-0214-F	GE-ZTB-0214-5	2-7/8" WRAP AROUND	113240
EE-ZTB-0308-0	EE-ZTB-0308-F	GE-ZTB-0308-5	3-1/2" WRAP AROUND	113241
EE-ZTB-0400-0	EE-ZTB-0400-F	GE-ZTB-0400-5	4" WRAP AROUND	113242
EE-ZTB-0408-0	EE-ZTB-0408-F	GE-ZTB-0408-5	4-1/2" WRAP AROUND	113243
EE-ZTB-0500-0	EE-ZTB-0500-F	GE-ZTB-0500-5	5" WRAP AROUND	113244



# CLINCHER® WRAPAROUND TONG DIES

Equipment Size	Model #	Jaws	Size Range of Jaws	Number of Dies	Steel	GRITFACE®	Aluminum
3-1/2" STD	CLE3500	CJ-LF-35 / CJ-35B	1-5/8" TO 3-1/2"	2	CLE135XXXX*	BB135XXXX*	CLEA135XXXX*
5-1/2" STD	CLES5500	CJ-51A / CJ-51B	2-1/16" TO 3-1/2" 3-5/8" TO 5-1/2"	2	CLES5500XXXX	BB5900XXXX	CLESA55XXXX
5-1/2" LJ	CLJ5500	N/A	2-1/16" TO 5-1/2"	2 SIDE	CLJ5500XXXX	BB5600XXXX	CLJA5500XXXX
		N/A	2-1/16" TO 5-1/2"	1 BACK	CLJ5501XXXX	BB5601XXXX	CLJA5501XXXX
5-1/2" UHT	CLE5500	CJ-55A OLD STYLE	2-1/16" TO 5"	2	CLE5500XXXX	BB5800XXXX	CLFA5500XXXX
		CJ-LF-55A	2-1/16" TO 3-1/2"	2	CLE5500XXXX	BB5800XXXX	CLFA5500XXXX
		CJ-55B	3-5/8" TO 5-1/2"	2	CLJ5501XXXX	BB5601XXXX	CLJA5501XXXX
5-1/2" XHT	CLE5500XHT	CJ-LF-59B	2-1/16" TO 5-1/2"	2	CLJ5501XXXX	BB5601XXXX	-
		CJ-59B	3-1/2" TO 5-1/2"	2	CLJ5501XXXX	BB5601XXXX	-
5-1/2" CM	CM5500	N/A	2-1/16" TO 5-1/2"	3	BUC5500XXXX	BB5700XXXX	BUCA5500XXXX
7-5/8" UHT	CLE7625	CJ-76A	2-3/8" TO 4-1/2"	2	BUC4500XXXX	BB4500XXXX	BUCA4500XXXX
		CJ-76B	4-3/4" TO 7-5/8"	2	BUC7625XXXX	BB7625XXXX	BUCA7625XXXX
7-5/8" CM	CM7625	N/A	2-3/8" TO 7-5/8"	3	BUC7625XXXX	BB7625XXXX	BUCA7625XXXX
7-5/8" LJ	CLJ7625	N/A	2-3/8" TO 7-5/8"	3	BUC7625XXXX	BB7625XXXX	BUCA7625XXXX
8-5/8" DP	CLE8625DP	CJ-76C	5-1/2" TO 7-5/8"	2	BUC7625XXXX	BB7625XXXX	BUCA7625XXXX
8-5/8" DP	CLE8625DP	CJ-86A	5-1/2" TO 8-5/8"	2	BUC8625XXXX	BB8625XXXX	BUCA8625XXXX
8-5/8" DP	CLE8625DP	CJ-LF-76D	2-3/8" TO 8-1/2"	2	BUC5500XXXX	BB5700XXXX	BUCA5500XXXX
8-5/8" DP	CLE8625DP	CJ-LF-86B	5-1/2" TO 8-5/8"	2	BUC8625XXXX	BB8625XXXX	BUCA8625XXXX
10-3/4"	CLE10750	CJ-10A	8-5/8" TO 10-3/4"	2	CLE1075XXXX	BB1075XXXX	-
10-3/4"	CLE10750	CJ-LF-10A	2-3/8" TO 7-5/8"	2	CLE1075XXXX	BB1075XXXX	-
14"	CLE14000	CJ-LF-14A	4-1/2" TO 7-5/8"	2	BUC7625XXXX	BB7625XXXX	BUCA7625XXXX
14"	CLE14000	CJ-LF-14B	7-5/8" TO 10-3/4"	2	BUCM1075XXXX	BB1075XXXX	BUCA1075XXXX
14"	CLE14000	CJ-LF-14C	7-5/8" TO 11-3/4"	2	CLEBU1175XXXX	BB1175XXXX	BUCA1175XXXX
14"	CLE14000	CJ-14A	10-3/4" TO 14"	2	CLE1400XXXX	BB1400XXXX	N/A
14" DP	CLE14000DP	CJ-14X	9-5/8" TO 14"	2	CLE1400XXXX	BB1400XXXX	N/A
	CLE14000DP	CJ-LF-14X	7-5/8" TO 11-3/4"	2	CLEBU1175XXXX	BB1175XXXX	N/A
	CLE14000DP	CJ-86A	5-1/2" TO 8-5/8"	2	BUC8625XXXX	BB8627XXXX	N/A

\*XXXX IS THE O.D. OF PIPE

# CLINCHER® WRAPAROUND BACKUP DIES

Equipment Size	Model	Number of Dies	Steel	GRITFACE®	Aluminum
4"	BUCS4000	3	BUC4000XXXX*	BB4000XXXX*	BUCA4000XXXX*
4-1/2" LOCKJAW™	BUCS4500	3	BUCS4500XXXX	BBS4500XXXX	BUCSA4500XXXX
4" STD	BUC4500	3	BUC4500XXXX	BB4500XXXX	BUCA4500XXXX
5-1/2" STD	BUCL5500	3	BUCL5500XXXX	BB5500XXXX	BUCLA5.5XXXX
5-1/2" LOCKJAW™	BUCS5500	2 SIDE	CLJ5500XXXX	BB5600XXXX	CLJA5500XXXX
		1 BACK	CLJ5501XXXX	BB5601XXXX	CLJA5501XXXX
5" UHT	BUC5500	3	BUC5500XXXX	BB5700XXXX	BUCA5500XXXX
5-1/2" DRILLPIPE	BUCD5500	3	BUC5500XXXX	BB5700XXXX	BUCA5500XXXX
5-1/2" XHT	BUCD55XHT	3	BUC5500XXXX	BB5700XXXX	BUCA5500XXXX
6-1/4" LOCKJAW™	BUCS6250	2 SIDE	BUCS6250XXXX	BB6250XXXX	BUCSA6250XXXX
		1 BACK	BUCS6251XXXX	BB6251XXXX	BUCSA6251XXXX
6-1/4" UHT	BUC6250	3	BUC7625XXXX	BB7625XXXX	BUCA7625XXXX
6-3/8" STD	BUC6375	3	BUC6375XXXX	BB6375XXXX	BUCA6375XXXX
7-5/8" UHT	BUC7625	3	BUC7625XXXX	BB7625XXXX	BUCA7625XXXX
7-5/8" LOCKJAW™	BUCS7625	3	BUC7625XXXX	BB7625XXXX	BUCA7625XXXX
8-5/8" UHT	BUC8625	3	BUC8625XXXX	BB8625XXXX	BUCA8625XXXX
8-5/8" DRILLPIPE	BUCDP8500	3	BUC8625XXXX	BB8625XXXX	BUCA8625XXXX
11-3/4" LOCKJAW™	BUCS11750-01	3 each 7-5/8" TO 11-3/4"	CLE10750XXXX	-	-
11-3/4" LOCKJAW™	BUCS11750-01	3 each 4-1/2" TO 7-5/8"	BUC7625XXXX	BB7625XXXX	BUCA7625XXXX
11-3/4" LOCKJAW™	BUCS11750-01	3 each 2-3/8" TO 4-1/2"	BUC4500XXXX	BB4500XXXX	BUCA4500XXXX
15" LOCKJAW™	BUCS15000	3 each 5-1/2" TO 8-5/8"	BUC8625XXXX	BB8625XXXX	BUCA8625XXXX
15" LOCKJAW™	BUCS15000	3 each 8-7/8" TO 15"	BUC1500XXXX	BB1500XXXX	BUCA1500XXXX

\*XXXX IS THE OUTSIDE DIAMETER OF THE PIPE

