

Figure 1003 – Misaligning Union

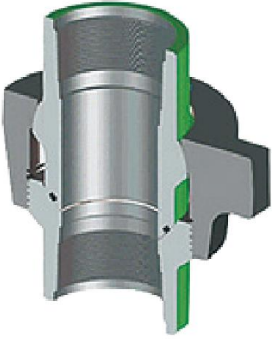


Figure 1003 (Mis-aligning Union) has NPT or Butt Weld Ends. It is constructed of Forged Alloy Steel, and comes with a Buna N O-Ring. Recommended for high pressure water, oil, mud or gas service where alignment of piping is a problem, with up to 7 1/2° angular adjustment from center (15° total).

Standard Service		H2S Service	
NSCWP	Test	NSCWP	Test
10,000/7,500 PSI	15,000/11,250 PSI	5,000 PSI	7,500 PSI

*All Working Pressures are Non-shock Cold Working Pressure Ratings (NSCWP)
3" rated at 10,000 PSI NSCWP; 4" and larger rated at 7,500 PSI NSCWP

Figure 1003 Threaded
Color Code: Green Subs/Black Nut

Nominal Pipe Size	4"
Qty. / Box	1
Part No.	U130400
Clearance Radius (A)	5.75"
End to End Threaded (B)	10.94"
Weight (lbs)	84.00
Material, Sub	4130 AS
Material, Nut	4140 AS

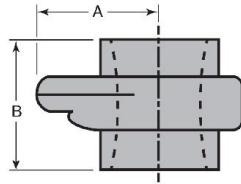


Figure 1003 Butt Weld Schedule 160 and XXH
Color Code: Green Subs/Black Nut

Nominal Pipe Size	3"	4"	5"
Qty. / Box	2	1	1
Part No.	U130340	U130440	U130540
Clearance Radius (A)	4.88"	5.75"	5.75"
End to End (B)	9.13"	10.94"	10.94"
Weight (lbs)	44.50	85.00	84.00
Material, Sub	4130 AS	4130 AS	4130 AS
Material, Nut	4140 AS	4140 AS	4140 AS

