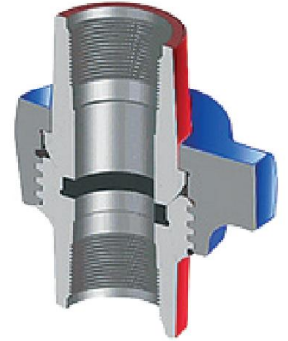


Figure 1502

Figure 1502 has a replaceable lip-type seal ring of Buna-N specifically designed to minimize fluid flow turbulence. The lip-type ring also provides a pressure seal and protection for the metal-to-metal seating surfaces. These unions are recommended for manifold and truck mounting or other installations where extreme high pressure is encountered. Recommended for air, water, oil, gas and mud service up to 15,000 PSI NSCWP.



Standard Service		H2S Service	
NSCWP	Test	NSCWP	Test
15,000 PSI	22,500 PSI	10,000 PSI	15,000 PSI

*All Working Pressures are Non-shock Cold Working Pressure Ratings (NSCWP)

Figure 1502 Threaded Color Code: Red Subs/Blue Nut

Nominal Pipe Size	1"	1 1/2"	2"	3"	4"
Qty. / Box	9	5	5	4	1
Part No.	U150100	U151500	U150200	U150300	U150400
Clearance Radius (A)	3.00"	3.74"	3.74"	4.50"	6.00"
End to End Threaded (B)	4.375"	4.52"	7.05"	7.625"	8.50"
Weight (lbs)	9.11	19.20	20.00	34.67	76.00
Material, Sub	4130 AS	4130 AS	4130 AS	4130 AS	4130 AS
Material, Nut	4140 AS	4140 AS	4140 AS	4140 AS	4140 AS

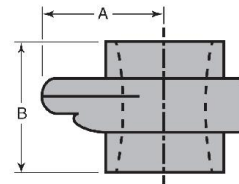


Figure 1502 Butt Weld Color Code: Red Subs/Blue Nut

Nominal Pipe Size	2"	3"	4"	5"
Qty. / Box	5	4	1	1
Part No.	*	*	*	*
Clearance Radius (A)	3.74"	4.50"	6.00"	6.75"
End to End (B)	6.30"	5.25"	8.50"	9.00"
Weight (lbs)	20.00	30.00	84.00	96.00
Material, Sub	4130 AS	4130 AS	4130 AS	4130 AS
Material, Nut	4140 AS	4140 AS	4140 AS	4140 AS

Figure 1502 Butt Weld–NACE Unions (Derated–10,000 PSI NSCWP) Color Code: Silver Subs/Green Nut

Nominal Pipe Size	2"	3"
Qty. / Box	5	4
Part No.	U150240-SG	U150330SG
Clearance Radius (A)	3.74"	4.50"
End to End (B)	6.30"	5.25"
Weight (lbs)	20.00	30.00
Material, Sub	4130 AS	4130 AS
Material, Nut	4140 AS	4140 AS