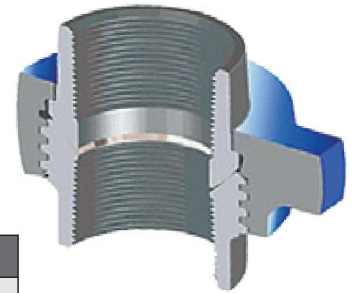


Figure 200

Figure 200 is a union of great utility. It meets most requirements in the medium pressure ranges. Precision seating surfaces assure dependable pressure seal. Like parts in each size are interchangeable with other manufacturers' unions. Recommended for water, oil or gas service up to 2,000 PSI NSCWP.



Standard Service		H2S Service	
NSCWP	Test	NSCWP	Test
2,000 PSI	3,000 PSI	2,000 PSI	3,000 PSI

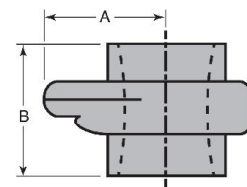
*All Working Pressures are Non-shock Cold Working Pressure Ratings (NSCWP)

Figure 200 Threaded Color Code: Gray Subs/Blue Nut

Nominal Pipe Size	1"	1 1/4"	1 1/2"	2"	2 1/2"	3"	4"	6"	8"	10"
Qty. / Box Part No.	40 U020100	30 U021200	30 U021500	16 U020200	8 U022500	6 U020300	4 U020400	1 U020600	1 U020800	1 U021000
Clearance Radius (A)	1.87"	2.50"	2.50"	2.91"	3.66"	3.96"	4.53"	6.125"	7.70"	8.98"
End to End Threaded (B)	2.65"	2.78"	2.85"	3.57"	4.31"	4.57"	5.04"	6.75"	7.31"	9.11"
Weight (lbs)	2.05	3.20	3.27	6.13	10.88	14.66	20.00	47.00	68.00	100.00
Material, Sub Material, Nut	A105 A105	A105 A395 D.I.	A105 A395 D.I.	A105 A105	A105 A395 D.I.	A105 A105	A105 A105	A105 A105	A105 A216 WCB	A216 WCB A216 WCB

Figure 200 Butt Weld Schedule 40 and 80 Color Code: Gray Subs/Blue Nut

Nominal Pipe Size	2"	3"	4"	6"	8"	10"
Qty. / Box Part No.	16 *	6 *	4 *	1 *	1 *	1 *
Clearance Radius (A)	2.91"	3.96"	4.53"	6.125"	7.70"	8.98"
End to End (B)	3.79"	4.50"	5.03"	6.75"	7.31"	9.25"
Weight (lbs)	6.63	15.67	22.00	52.00	78.00	108.00
Material, Sub Material, Nut	A105 A105	A105 A105	A105 A105	A105 A105	A105 A216 WCB	A216 WCB A216 WCB



*Part numbers vary per weld type and schedule
Also available in Socket Weld

