

Figure 300–Flat Face Union

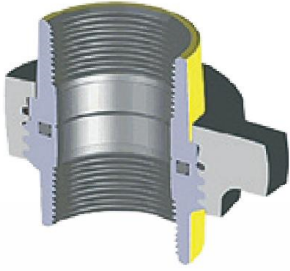


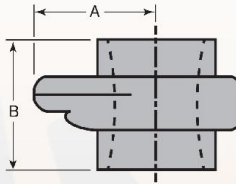
Figure 300 is manufactured from carbon steel. This Flat-Face type union has an O-Ring seal. Recommended for use where straight breakout of pipe segments is required. Suitable for water, oil, or gas service at pressures up to 12,500 PSI NSCWP. Please note that colors vary per pressure rating.

Standard Service		H2S Service	
NSCWP	Test	NSCWP	Test
2,000 PSI	3,000 PSI	2,000 PSI	3,000 PSI
2,500 PSI	3,750 PSI	2,500 PSI	3,750 PSI
12,500 PSI	18,750 PSI	N/A	N/A

*All Working Pressures are Non-shock Cold Working Pressure Ratings (NSCWP)

Thread Ends - 2,000 PSI NSCWP Color Code: Yellow Subs/Black Nut

Nominal Pipe Size	2"
Qty. / Box	16
Part No.	U030200
Clearance Radius (A)	2.91"
End to End Threaded (B)	3.76"
Weight (lbs)	6.50
Material, Sub	A105*
Material, Nut	A105



*Also available with 316SS Subs

Thread Ends - 2,500 PSI NSCWP Color Code: Light Gray Subs/Green Nut

Nominal Pipe Size	1"
Qty. / Box	32
Part No.	UY30100C100
Clearance Radius (A)	2.33"
End to End Threaded (B)	3.20"
Weight (lbs)	2.79
Material, Sub	A105
Material, Nut	A105

Thread Ends - 12,500 PSI NSCWP Color Code: Zn-plated Subs/Zn-plated Nut

Nominal Pipe Size	1/2"	3/4"	1"
Qty. / Box	40	40	16
Part No.	UY30050G100	UY30075G100	UY30100G100
Clearance Radius (A)	1.80"	1.80"	2.52"
End to End Threaded (B)	2.96"	3.08"	3.53"
Weight (lbs)	2.05	2.09	4.36
Material, Sub	SAE 4130	SAE 4130	SAE 4130
Material, Nut	SAE 4140	SAE 4140	SAE 4140